

8

7

6

5

4

3

2

1

ITEM NO.

PART NO.

DESCRIPTION

QTY.

MSRP

1

H169

bolt, 1/4-20 x 2", hex head

8

\$3.19 ea

2

H213

washer, 1/4" lock, s/s

8

\$0.99 ea

3

H210

washer, 1/4" flat, s/s

8

\$0.99 ea

4

G032

bumper, 17", floor machine

1

\$28.99 ea

5

H608

bell housing, 17"

1

\$47.99 ea

6

P540

spacer, bell housing/chassis

8

\$0.99 ea

7

H848

chassis, floor machine

1

\$41.99 ea

8

C314

motor, 1.5 HP, 60HZ, 120/240 V

1

\$578.99 ea

9

H143

motor cover, floor machine

1

\$25.99 ea

10

H230

screw, 10-32 x 1/2 phil pan

6

\$0.99 ea

11

H841

support, pivot, floor machine

2

\$21.99 ea

12

H702

roll pin, 1 3/4" x 1/2", pivot, floor machine

2

\$0.99 ea

13

H341

handle pivot, floor machine

1

\$74.99 ea

14

H705

bolt, guide, locking piston

1

\$0.99 ea

15

H847

bushing, locking piston

1

\$17.99 ea

16

H152

retaining ring, internal 1 1/2"

1

\$5.99 ea

17

H157

spring, handle adjustment

1

\$5.99 ea

18

H844

locking piston, handle adj.

1

\$19.99 ea

19

H151

bolt, 5/16-18 x 3/4" Long SHCS

10

\$0.99 ea

20

H421

washer, 5/16" lock, s/s

10

\$0.99 ea

21

H843

locking arc, handle adj, floor machine

1

\$51.99 ea

22

H153

cottor pin, 1 1/2" x 5/32"

1

\$0.99 ea

23

H340

axle, 12.25" x .50" dia

1

\$7.99 ea

24

H427

washer, wave, 5806-60-3

4

\$1.49 ea

25

H212

washer, 9/16" id x 1" od, flat, s/s

2

\$0.99 ea

26

H170

wheel, 5"

2

\$11.99 ea

27

H219

cap, axle, 1/2"

2

\$0.99 ea

28

H148

washer, 5/16", narrow

8

\$0.99 ea

29

H159

cable, handle adj, floor machine

1

\$6.99 ea

30

H273

nut, kep, #10-32 zinc

2

\$0.99 ea

31

H916

clip, cord, 5/16", nylon

1

\$0.99 ea

32

H144

strain relief, power cord, floor machine

1

\$6.99 ea

33

E789

50' 14/3 Extension cord - Yellow

1

\$49.99 ea

34

H149

bolt, 5/16 shldr x 5/8" w/ 1/4-20 thrd

1

\$1.99 ea

35

P529

spacer, lever, handle adj.

1

\$1.99 ea

36

H216

nut, lock, 1/4-20, nylon insert, s/s

1

\$0.99 ea

37

H839

lever, handle adj., floor machine

1

\$7.99 ea

38

H167

switch, floor machine

1

\$13.99 ea

39

H211

washer, 1/4" id x 1" od, flat, s/s

1

\$0.99 ea

40

H275

6-32 x 3/16 p-pan internal sem zinc

1

\$0.99 ea

41

H166

insulation, switch, floor machine

1

\$3.99 ea

42

H855

lever, switch, floor machine

1

\$6.99 ea

43

H160

spring, switch/lever

2

\$0.99 ea

44

G040

grip, handle, floor machine

2

\$1.99 ea

45

P541

lockout, floor machine

1

\$1.99 ea

46

H161

roll pin, 1 3/4" x 1/8", floor machine

2

\$0.99 ea

47

H610

switch cover floor machine

1

\$16.99 ea

48

H168

spring, lockout, floor machine

1

\$1.99 ea

49

H215

nut, hex, 1/4-20 s/s

1

\$0.99 ea

50

P524

plug, plastic, floor machine handle

1

\$0.99 ea

51

H231

screw, 10-32 x 1" phil pan

1

\$0.99 ea

52

H849

handle, floor machine

1

\$89.99 ea

53

H165

cord, hook, floor machine

1

\$23.99 ea

54

H150

bolt, 5/16-18 x 1 1/4" Long SCHS

2

\$0.99 ea

55

H164

grommet, floor machine, 3/16" groove

1

\$1.99 ea

20" VERSION:

PART NO.	DESCRIPTION	QTY.	REPLACES	MSRP
G041	bumper, 20", floor machine	1	G032 (#4)	\$31.99 ea
H609	bell housing, 20"	1	H608 (#5)	\$64.99 ea

NAME

DATE

DRAWN

M.LaBarbera

9/2/11

CHECKED

PROPRIETARY AND CONFIDENTIAL

THE INFORMATION CONTAINED IN THIS DRAWING IS THE SOLE PROPERTY OF MYTEE PRODUCTS, INC. ANY REPRODUCTION IN PART OR AS A WHOLE WITHOUT THE WRITTEN PERMISSION OF MYTEE PRODUCTS, INC. IS PROHIBITED.

TITLE:

17" Floor Machine. 115V. Imperial motor (#AD15019C)

SIZE

DWG. NO.

REV

C

HD-17

OD

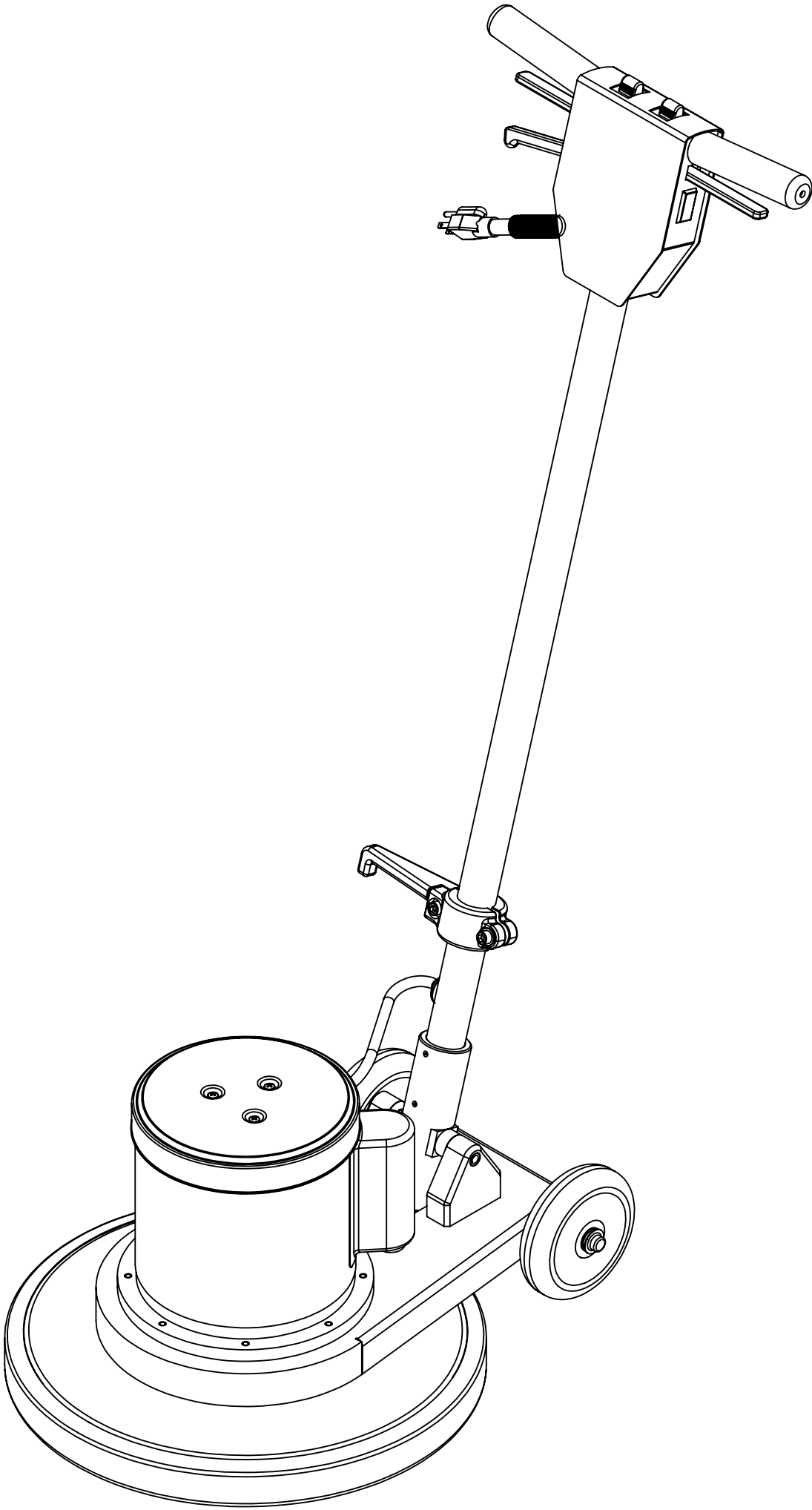
SCALE: 1:8

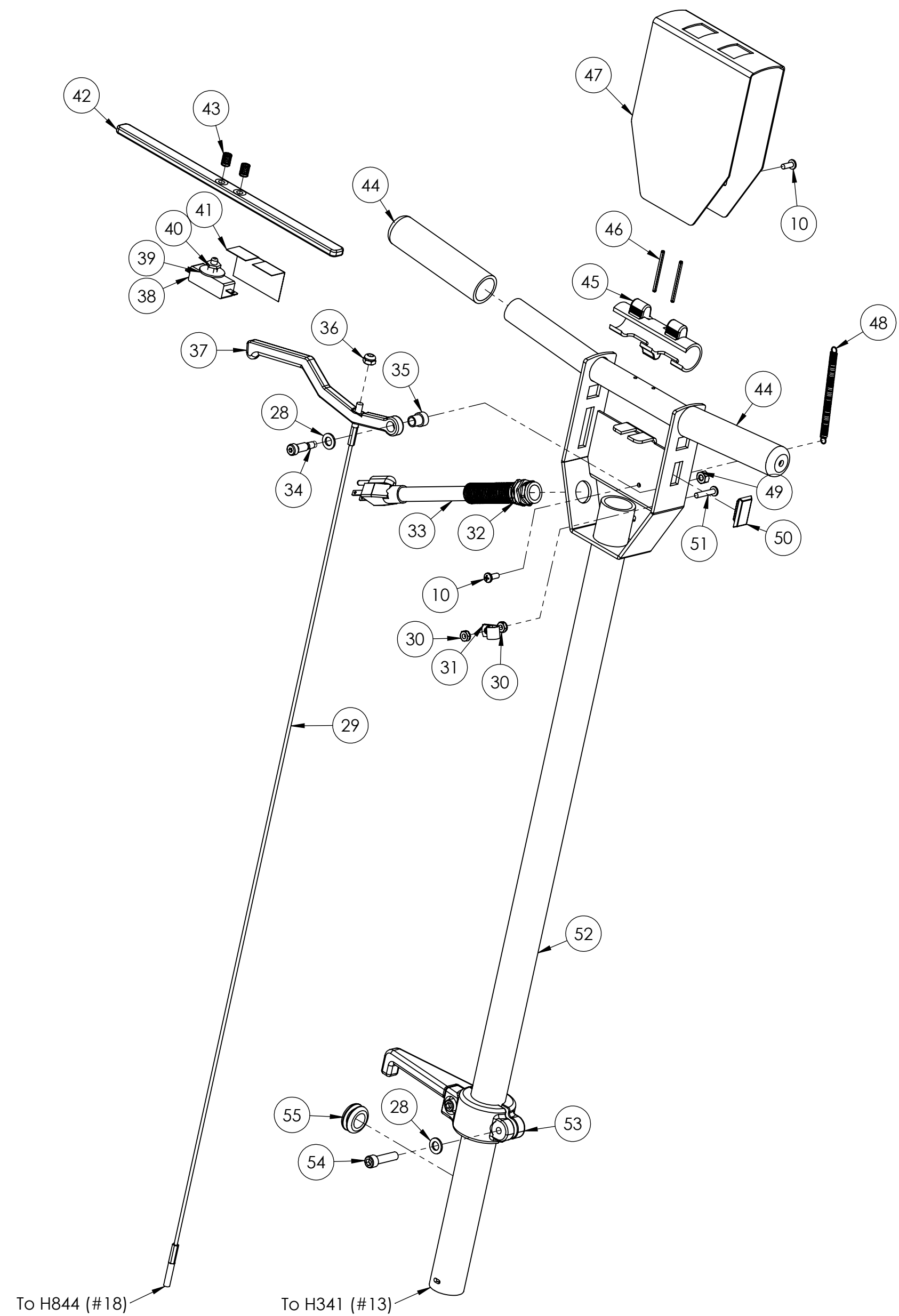
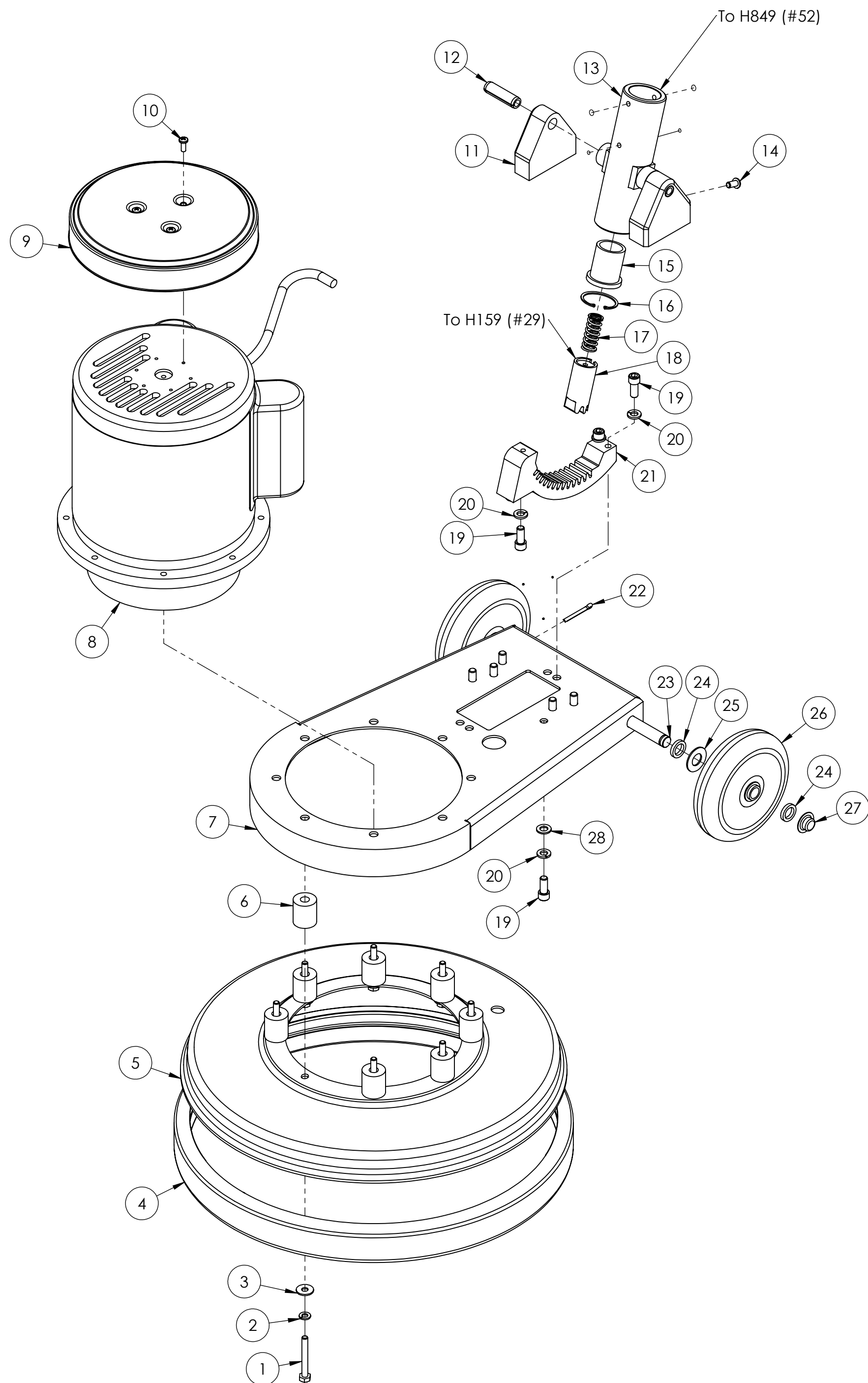
DO NOT SCALE DRAWING

SHEET 1 OF 2

MYTEE PRODUCTS, INC.

858-679-1191





NAME		DATE	
DRAWN M.LaBarbera		9/2/11	
CHECKED			
<p>PROPRIETARY AND CONFIDENTIAL</p> <p>THE INFORMATION CONTAINED IN THIS DRAWING IS THE SOLE PROPERTY OF MYTEE PRODUCTS, INC. ANY REPRODUCTION IN PART OR AS A WHOLE WITHOUT THE WRITTEN PERMISSION OF MYTEE PRODUCTS, INC. IS PROHIBITED.</p>			
<p>MYTEE PRODUCTS, INC. 858-679-1191</p>			
TITLE:			
<p>17" Floor Machine. 115V. Imperial motor (#AD15019C)</p>			
SIZE	DWG. NO.		REV
C	HD-17		OD
SCALE: 1:8		DO NOT SCALE DRAWING	SHEET 2 OF 2