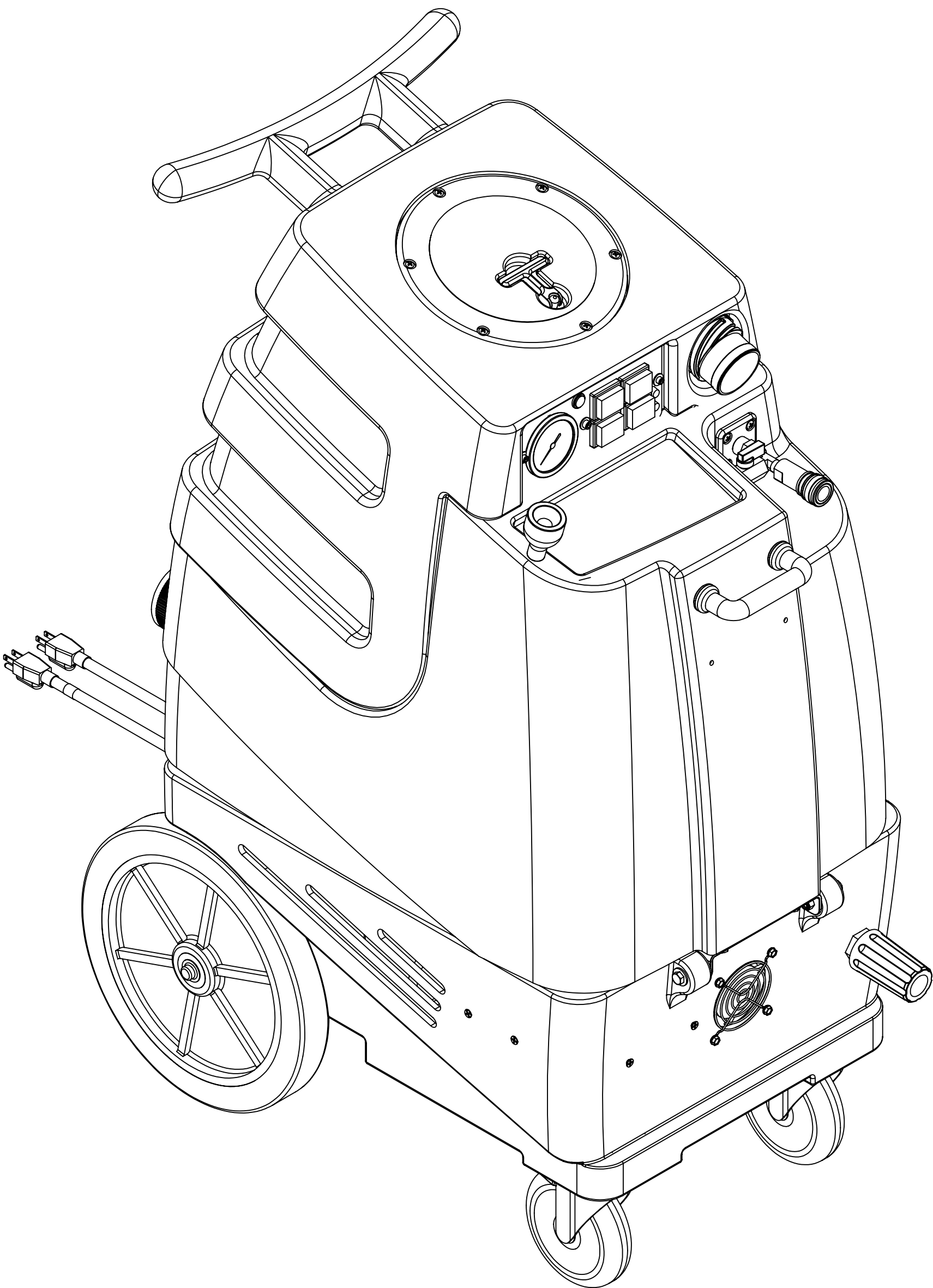


			8			7	
	ITEM NO.	PART NO.	DESCRIPTION	QTY.	MSRP		
	1	C317	fan, cooling, 115V	1	\$21.49 ea		
	2	H296	guard, cooling fan, wire	3	\$2.99 ea		
	3	H343	screw, #10 x 5/8" hex head zinc	12	\$0.99 ea		
	4	H186	screw, 10-32 x 3/4, phil flat full thread	4	\$0.99 ea		
F	5	E370	controller, water level, dual pump or vac	1	\$94.99 ea		
	6	H273	nut, kep, #10-32 zinc	8	\$0.99 ea		
	7	H033	plastite screw, 1/4 x 3/4"	8	\$2.99 ea		
	8	H666	caster, 5", Black hub & gray tread	2	\$23.19 ea		
	9	E564	controller, circuit light	1	\$62.99 ea		
	10	H254	washer, axle, cut 1/2" id	6	\$0.99 ea		
	11	H371	axle, 18.25" x .50" dia	1	\$9.99 ea		
	12	H251	wheel, 12"	2	\$41.99 ea		
	13	H219	cap, axle, 1/2"	2	\$0.99 ea		
	14	H221	nut, lock, 1/2" steel	2	\$1.99 ea		
	15	H220	fitting, strain relief, cord	2	\$3.19 ea		
E	16	E550	power cord, pigtail, 30", 12/3, black	2	\$11.49 ea		
	17	P731	base, speedster	1	\$141.99 ea		
	18	H256	screw, 10-32 x 3/4" phil pan head, zinc	6	\$0.99 ea		
	19	H528	bracket, heater mounting, dual	1	\$29.99 ea		
	20	H903A	heater, aluminum cast, single	2	\$78.99 ea		
	21	E571	heating rod, 600W, 115V	1	\$49.99 ea		
	22	E574	Thermostat, 310°F ± 10°F, Manual, 1/4"	2	\$17.99 ea		
	23	H274	screw, 6 x 3/16, phil pan head, self-tapping	10	\$0.99 ea		
	24	E573	Thermostat, 200°, Auto, 1/4"	2	\$16.49 ea		
	25	E519	heating rod, 1000W, 115V	1	\$51.99 ea		
	26	B207	elbow, brass, 90 deg, 1/4" fpt x 1/4" fpt	2	\$5.99 ea		
	27	B107	nipple, brass, 1/4"m, hex	6	\$3.19 ea		
D	28	AH156	hose, 3/8" x 6.5", (OAL), f x fsw, 5400 Gray	1	\$23.99 ea		
	29	B103	elbow, brass, 90 deg, 1/4"mpt x 1/4" fpt	5	\$4.49 ea		
	30	B113	tee, brass, 1/4" fpt	1	\$6.99 ea		
	31	B643	adapter, brass, 3/8" fnpt x 1/4" mnpt	1	\$4.99 ea		
	32	AH108S	hose, pulse, 3/8" x 17-1/2", (OAL)	2	\$31.99 ea		
	33	B259	qd, brass, 1/4" fqd x mpt	1	\$11.99 ea		
	34	B260	qd, brass, 1/4" mqd x fpt	1	\$10.49 ea		
▶	35	H216	nut, lock, 1/4-20, nylon insert, s/s	6	\$0.99 ea		
	36	H210	washer, 1/4" flat, s/s	18	\$0.99 ea		
	37	H342	bolt, 1/4-20 x 1" hex head, s/s	4	\$0.99 ea		
	38	AH184	hose, pulse, 3/8" x 17-1/2", (OAL)	2	\$31.99 ea		
	39	B652	elbow, brass, 90 deg, 3/8"mpt x 1/4"mpt	3	\$8.49 ea		
	40	B259A	qd, brass, 1/4" fqd x mpt	3	\$15.99 ea		
C	41	B260A	qd, brass, 1/4" mqd x fpt	3	\$8.99 ea		
	42	C313A	pump, CAT, 50-500 PSI, 120/240v	1	\$599.99 ea		
	43	B186	elbow, brass, 90 deg, 3/8"mpt x 3/8" fmpt	2	\$8.99 ea		
	44	B105	bushing, brass, 3/8"mpt x 1/4"	1	\$3.19 ea		
	45	PH615-36	sol hose, 1/2" kuri 100psi	1	\$8.99/ft		
	46	H347	clamp, hose, 5/16-29/32	6	\$1.99 ea		
	47	B644	adapter, brass, 1/2" barb x 1/4" mpt	1	\$2.49 ea		
	48	B160	adapter, brass, 1/2" barb x 3/8" fsw, ball end	1	\$3.49 ea		
	49	PH634-20	sol hose, 1/4", 300psi, black	1	\$6.49/ft		
	50	B119	filter, strainer, 1/4"	1	\$3.99 ea		
	51	B152	elbow, brass, 90 deg, 1/4" barb x 1/4" mpt	1	\$5.49 ea		
	52	H044	bracket, regulator, panel mount	1	\$27.99 ea		
B	53	B127	plug, brass, 1/4"mpt, hex	1	\$0.99 ea		
	54	C313C	regulator, 450 psi, silver spring	1	\$86.99 ea		
	55	H770	bolt, 1/4-20 x 1/2" serrated hex flange, zinc	2	\$0.99 ea		
	56	H912	bracket, rear, fb/spy	1	\$9.99 ea		
	57	H768	bolt, 1/4-20 x 3/4" serrated hex flange, zinc	8	\$0.99 ea		
	58	H124	Cuff-Lynx, 2" mpt x 2" female cuff	2	\$3.99 ea		
	59	H194	coupler, 2" dia x 2.5" length, s/s	2	\$10.00 ea		
	60	H217	clamp, hose, 2-1/4 dia	4	\$1.49 ea		
	61	PH628-20	vac hose, 2", wire reinforced	2	\$8.99/ft		
	62	P732	sol tank, speedster	1	\$141.99 ea		
	63	H390A	bracket, "L"	2	\$6.99 ea		
	64	H178	faucet fill	1	\$10.99 ea		
	65	G018	cover, sol tank (sp)	1	\$12.99 ea		
	66	H203	bolt, 1/4-20 x 1-1/4"	2	\$0.99 ea		
	67	H211	washer, 1/4" id x 1" od, flat, s/s	6	\$0.99 ea		
	68	G052	washer, buna 1-1/8" od x 3/16" id	6	\$1.99 ea		
A	69	H213	washer, 1/4" lock, s/s	10	\$0.99 ea		

			6			5	
	ITEM NO.	PART NO.	DESCRIPTION	QTY.	MSRP		
	70	H215	nut, hex, 1/4-20 s/s	2	\$0.99 ea		
	71	H484	plate, mounting, QD	1	\$4.99 ea		
	72	B142	coupling, brass, 1/4" fpt x 1/4" fpt	1	\$4.49 ea		
	73	B135	tee, brass, 1/4" mpt	1	\$5.49 ea		
	74	B102	qd, brass, 1/4" f	1	\$17.99 ea		
	75	B656	ball valve, 1/4"	1	\$13.49 ea		
	76	B109	adapter, brass, 1/4" barb x 1/4" mpt	1	\$1.99 ea		
	77	PH634-36	sol hose, 1/4", 300 PSI	1	\$6.49 ft		
	78	H485	handle, breeze and dx	1	\$6.99 ea		
	79	H316	bolt, 1/4x1-1/2", hex head zinc	2	\$0.99 ea		
	80	H378	bracket, front hinge, sp/fb	1	\$8.99 ea		
	81	H201	bolt, 1/4-20 x 1/2", hex head, zinc	2	\$0.99 ea		
	82	H299	washer, 11/16" id x 1-1/2" od x .075, s/s	4	\$0.99 ea		
	83	B216	nipple, brass, 3/8" x close	1	\$1.99 ea		
	84	B210	bushing, brass, 1/2"mpt x 3/8" fpt, hex	1	\$2.49 ea		
	85	B119A	filter, strainer, 1/2"	1	\$6.49 ea		
	86	H314	nut, lock, 1-1/2", steel	2	\$1.99 ea		
	87	P520	adapter, pvc, 1-1/2" mpt x 1-1/2" fms	2	\$2.99 ea		
	88	PH633-4	pipe, pvc, 1-1/2"	2	\$4.99/ft		
	89	PH633-2.5	pipe, pvc, 1-1/2"	2	\$4.99 ft		
	90	P502	adapter, 1.5" pvc, fslip x fslip	2	\$5.00 ea		
	91	G021	screen, mesh filter, 2-3/8" dia	2	\$4.99 ea		
	92	G022	filter, foam, 2-3/8" x 1"	2	\$2.99 ea		
	93	PH633-1	pipe, pvc, 1-1/2"	2	\$4.99 ft		
	94	PH633-6	pipe, 1-1/2" pvc	2	\$4.99 ft		
	95	P503	adapter, 1.5" pvc, 45 deg, fslip x fslip	4	\$3.29 ea		
	96	H226	spout, drain, 45 degree	1	\$3.19 ea		
	97	H225	valve, drain, 1-1/2"	1	\$20.99 ea		
	98	P733	vac tank, speedster	1	\$190.99 ea		
	99	A926	elbow, inlet assembly 2"	1	\$15.99 ea		
	100	G091	gasket, 7", vac lid	1	\$11.99 ea		
	102	G090	lid, vac tank, clear, 7"	1	\$36.99 ea		
	102	H304	screw, #8 x 5/8 phil oval, s/s	6	\$0.99 ea		
	103	G083	gasket, 2" inlet	1	\$2.49 ea		
	104	H135	Cuff-Lynx, 2" m cuff x 2" mpt	1	\$3.99 ea		
	105	E512B	light, indicator, 125v (amber)	1	\$9.99 ea		
	106	H337	plate, switch, 1003DX, 1005DX	1	\$8.99 ea		
	107	E511	light, red, 250v	2	\$5.99 ea		
	108	E515	switch, rocker, 2 position	3	\$13.99 ea		
	109	E516	switch, rocker, 3 position	1	\$14.99 ea		
	110	H389	screw, 10-32 x 1/2" SHCS, alloy	1	\$0.99 ea		
	111	H612	Washer, #8, flat regular	3	\$0.99 ea		
	112	H246	screw, 8-32 x 3/8" SHCS, alloy, Black	2	\$0.99 ea		
	113	H308D	gauge, pressure, 2000 PSI	1	\$38.99 ea		
	114	AH203	hose, pulse, 38" x 34"	1	\$47.99 ea		
	115	B156	nut, 1/4" npt	1	\$1.99 ea		
	116	H212	flat washer, 9/16"ID x 1 1/16"OD, AN960-C916	2	\$0.99 ea		
	117	E373	level switch, vacuum shut-off, rear threads	1	\$13.99 ea		
	118	G004	gasket, vacuum motor	2	\$8.99 ea		
	119	C302LA	vac motor, 3 stage, low amp	2	\$139.99 ea		
	120	H096	bolt, hex, 1/4-20 x 4", zinc Finish	6	\$0.99 ea		
	121	H503	vac support, 3-stage, 3.25", no threads	6	\$3.99 ea		

ITEMS NOT SHOWN

PART NO.	DESCRIPTION	QTY.	MSRP
G008	piglet filet	1	\$6.29 pak
G085	gasket, strip, 3/4" x 36" x 1/8"	1	\$4.99 ea
H375	hanger, wire formed, hose	1	\$10.99 ea
H230	screw, 10-32 x 1/2" phil pan head, s/s	2	\$0.99 ea
H141	Cuff-Lynx, 2" to 1.5" reducer	1	\$3.99 ea
E530	power cord, ext 50', 12/3 black	2	\$74.99 ea
H110	Cuff-Lynx, 2" hose x 2" fem swivel Cuff-Lynx	1	\$3.99 ea
AD127	stop sign, register your product	1	
ADM-SPEEDSTERS	manual, speedsters	1	



UNLESS OTHERWISE SPECIFIED:		NAME		DATE		MYTEE PRODUCTS, INC. 858-679-1191	
DIMENSIONS ARE IN INCHES		DRAWN		8/20/13			
TOLERANCES:		CHECKED					
ANGULAR: ± .5							
ONE PLACE DECIMAL ± .005		COMMENTS:		TITLE:		speedster	
TWO PLACE DECIMAL ± .001							
THREE PLACE DECIMAL ± .001							
MATERIAL							
FINISH				SIZE DWG. NO.		REV	
				D 1003DX		A	
				SCALE: 1:48		DO NOT SCALE DRAWING	
						SHEET 1 OF 3	

F

E

D

C

B

A

F

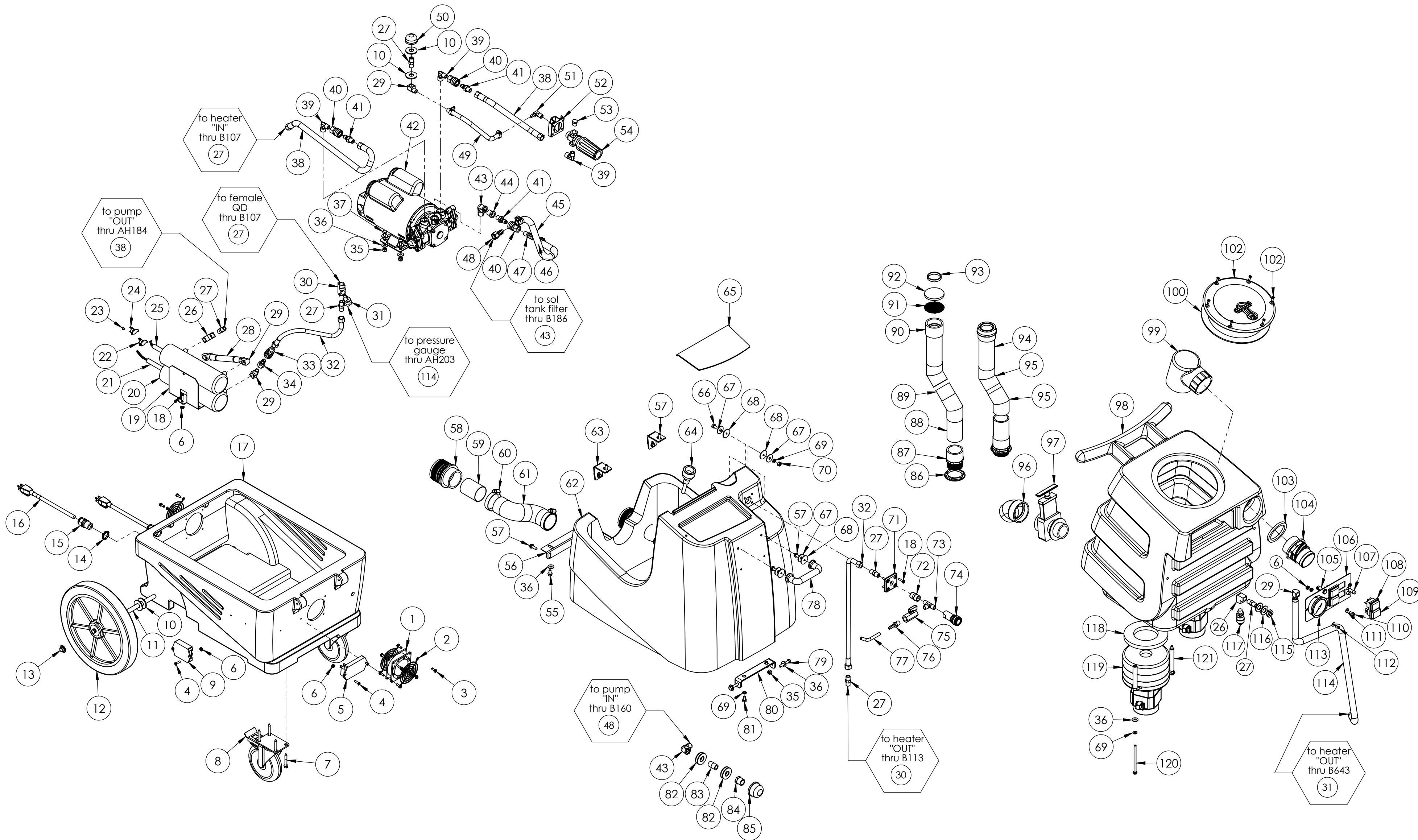
E

D

C

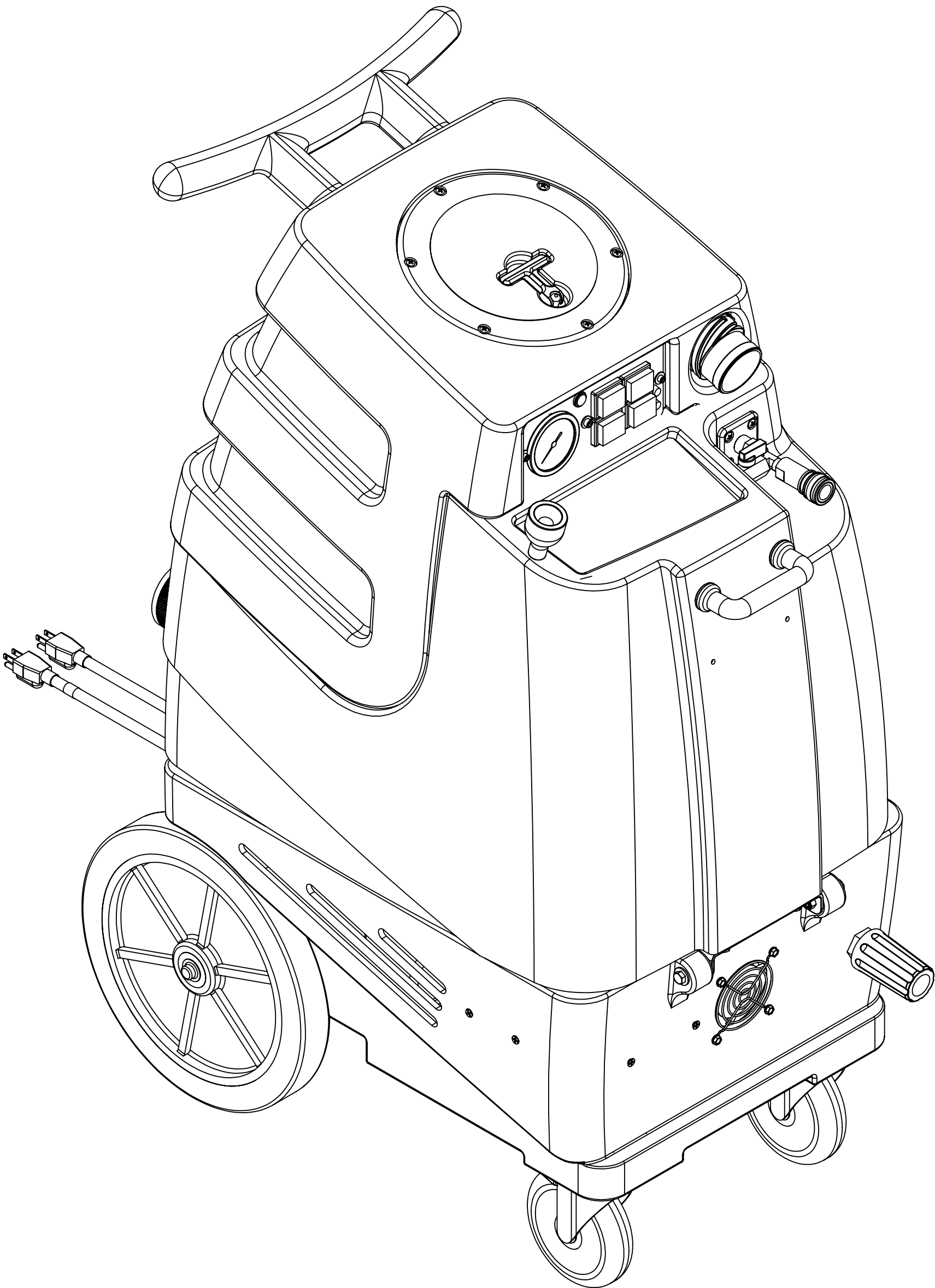
B

A



	NAME	DATE	MYTEE PRODUCTS, INC. 858-679-1191	
DRAWN	M.LaBarbera	8/2013		
CHECKED			TITLE:	
COMMENTS:			speedster	
PROPRIETARY AND CONFIDENTIAL  THE INFORMATION CONTAINED IN THIS DRAWING IS THE SOLE PROPERTY OF MYTEE PRODUCTS, INC. ANY REPRODUCTION IN PART OR AS A WHOLE WITHOUT THE WRITTEN PERMISSION OF MYTEE PRODUCTS, INC. IS PROHIBITED.			SIZE	DWG. NO.
			C	1003DX
			SCALE: 1:48	DO NOT SCALE DRAWING
			SHEET 2 OF 3	

REVISIONS			
REV.	DESCRIPTION	DATE	APPROVED
OD	ORIGINAL DRAFT	-	JFL
A	REPLACED G003 W G022	8/2013	JFL



PROPRIETARY AND CONFIDENTIAL  
THE INFORMATION CONTAINED IN THIS  
DRAWING IS THE SOLE PROPERTY OF  
MYTEE PRODUCTS, INC. ANY  
REPRODUCTION IN PART OR AS A WHOLE  
WITHOUT THE WRITTEN PERMISSION OF  
MYTEE PRODUCTS, INC. IS PROHIBITED.

UNLESS OTHERWISE SPECIFIED:			NAME	DATE
DIMENSIONS ARE IN INCHES		DRAWN	M. LaBarbera	8/2013
TOLERANCES:		CHECKED		
ANGULAR: ± .5		COMMENTS:		
ONE PLACE DECIMAL ± .005				
TWO PLACE DECIMAL ± .003				
THREE PLACE DECIMAL ± .001				
MATERIAL				
FINISH				

MYTEE PRODUCTS, INC. 858-679-1191			
TITLE: speedster			
SIZE D	DWG. NO. 1003DX	REV A	
SCALE: 1:48	DO NOT SCALE DRAWING	SHEET 3 OF 3	

REV
D 1003DX (9-2012)