



Environmental tips



Please dispose of the package, used components (battery) and hazardous fluid (antifreeze and machine oil) properly according to local waste disposal regulations to ensure environmental safety and please remember to recycle them for further use if possible.



JL ROCKSHEEN OWNER'S GUIDE

17" MULTI-FUNCTIONAL LOW SPEED FLOOR BUFFER

ISSA MEMBER®
The Experts
On Cleaning and Maintenance
ISO9001:2008 International
Quality System Certified

This manual contains important safety precautions and instructions on the correct operation of product, please read this carefully before using the product.

Operation instructions for weighted floor machine

1. Install weighted floor disk: erect the operating rod, put the weighted floor machine reverse on the floor, select proper retreading disk according to the stone-surface material and wear abrasion, install the retreading disk on the drive plate (magic sticker) of the master machine.
2. Install water tank (if any): put the weighted floor machine horizontally on the floor, loosen the fasteners on upper and lower parts of the water tank, install the tank, adjust the position of the water tank on the operating rod. Tighten the water tank, then connect one end of plastic pipe to the outlet of the tank, and the other end to the inlet of the weighted floor machine base plate.
3. Adjust operating rod: put the weighted floor machine on the normal floor, pull up the height regulating handle. Turn the operating rod, set it on a proper working position to ensure erect posture and arm slightly bending when operating, then release the height regulating handle, turn the operating rod up and down by hand. Check whether the operating rod can be correctly locked by adjusting gear.
4. Load water: stone surface must be kept wet when retreading. For the weighted floor machine with water tank, it is convenience to add water on the surface. Load the water tank with adequate water (normal temperature) before operating.
5. Wire connection: connect the leading cable to the power coupler of the operating rod, remove the core cable, check to ensure the voltage identical with the rating voltage, then connect the core cable into the socket.
6. Start up: both the left switch lever and the right switch lever can control machine startup, for safety consideration, the startup switches work jointly with the safety interlock lever, push the safety interlock lever from the middle to the bottom while press the startup switch, loose the safety interlock lever after the weighted floor machine startup.
7. Direction control: after the weighted floor machine startup, pull up or press down the operating rod slightly, the weighted floor machine will move to right or left automatically. Press down the operating rod will increase the hind pressure of the drive plate, thus make weighted floor machine move to left. Pull up the operating rod will increase the fore pressure of the drive plate, thus make weighted floor machine move to right.
8. Control outflow of the water: for the weighted floor machine with water tank, when it need to add water on the floor, pull up the tank handle, water will flow out, release the tank handle, water will stop.
9. Operation completion: when finishing the work, first disconnect the power, then remove the attachment from the master machine and wash them clean. Never leave the retreading disk on the machine. For the weighted floor machine with water tank, drain the water remains from tank, and flushing the tank by fresh water.

Safety regulations and attentions

1. Before operating, please read this manual carefully to ensure operate the weighted floor machine correctly. If any question, please contact the local sales agency, make the weighted floor machine working in optimum running condition and make it under effective care and maintenance by the help from the sales agency.
2. Please check to ensure the power voltage identical with the rated voltage marked on the nameplate before connecting the power cord. Pull out the power plug after using.
3. Check to ensure the power cable undamaged before using. If the power cable was damaged or the instrument fault, let a maintenance man from the shop or similar specialist change or repair, to prevent unfavorable result. Never use the spare parts from other company, otherwise, we assume no responsibility.
4. Never use the weighted floor machine outdoor when it rains, to prevent short circuit and electric shock. Store the weighted floor machine in the dry area indoor and keep it from dust.
5. Make sure that power cable is clear from machine base, or damage will occur, disconnect power while maintenance and cleaning.
6. Keep the stone surface wet when retread using grinding tray, or the grinding tray and stone surface will be burned out.

Retreading procedure of the weighted floor machine identify stone material

1. All nature stone can be renewed glossy by retreading.
2. Most of the dyed stone to be redyed after renewing glossy.
3. Too thin stone is unfit to retread when with deep scratch.
4. For some stone with craze crack or severe damage, please make partial replacement before retreading.

●Set the retreading process

1. Recommend below retreading disk: 50#, 100#, 200#, 300#, 500#, 800#, 1000#, 1500#, 2000#, 3000#.
 50#/100# use for coarse grinding, usually apply to stone surface with deep scar and corrosion cracking (scar wider than 0.2mm) or large area scar and corrosion cracking (scar width 0.1mm, but over a large area).
 200#/300# apply to stone surface which has been processed by 50# or 100#.
 500#, for stone surface with unobvious scar which is visible but not intense to touch, can use from 500#.
 800#/1000# use for smooth grinding, to smooth the stone surface after retreading.
 1500#/2000# use for polishing, if the stone surface is smooth, just shineless, can use 1500# or 2000# directly to renew glossy.
 3000# use for polishing and seal-joint area regrinding.
2. To make the grinding tray durable, please use per the order as described above.

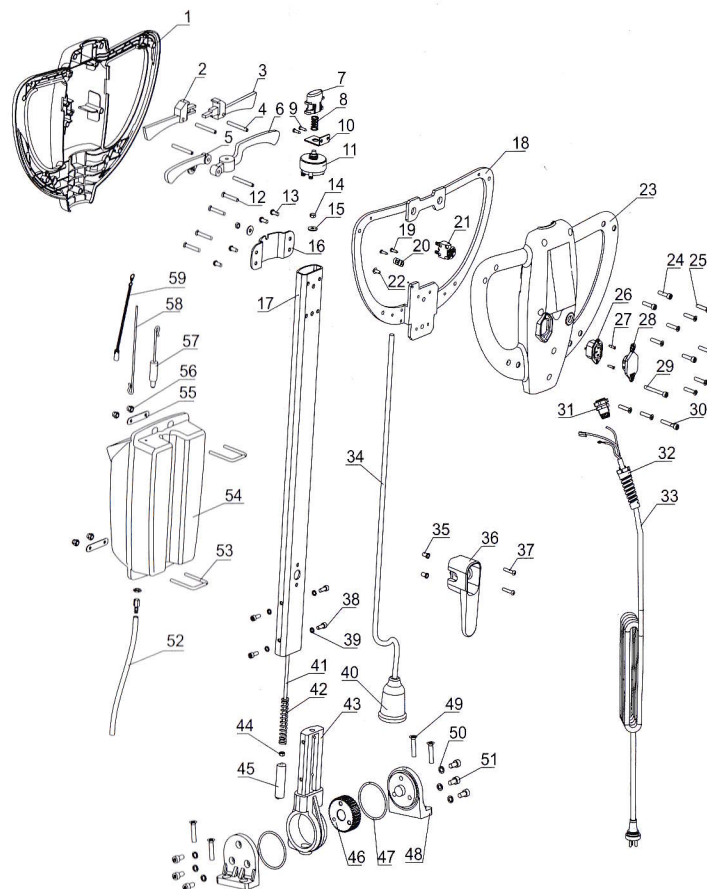
●Operation

1. Clean the stone surface: remove wax/oil/sand from the stone surface, or it will damage the stone surface and retreading disk.
2. Install the retreading disk: retreading disk must be installed on the drive plate (magic sticker), for 43MM retreader, usually use 3 to 5 pieces of retreading disk, and for portable grinder, use one. Installation mode should be regular triangle, regular quadrangle, regular pentagon and regular hexagon to keep balance when running. Install on the edge of the drive plate can enhance the efficiency. The quantity of the retreading disks depends on the power performance of the weighted floor machine and stone material, for large power and soft stone, can install more, generally install 5 pieces.
3. Retreading
 - 1) Fill and smooth the seam, may use white cement to color and seal edge, but it is best to use strong glue to sew the stone closed, then coated with water-proof agent.
 - 2) Use manual grinder to smooth the seam after dry, in order to decrease the possibility of grinding lap damage and enhance the efficiency.
 - 3) Select the grinding tray to grinding the stone surface with water according to retreading process. Remember to keep the stone surface wet. It is better to retreading 5 to 10 squares per time, thus unlikely to forget some part of the stone surface during the process, and ensure even grinding, not affect others working. Must clean the traction tray while change a new retreading disk, and the stone-surface is cleaned and washed by wet vacuum machine. Remember to use the retreading disk in orders.
4. Interfaces may be formed between working units (5-10 squares), when plan for a day of work, use 3000# to regrind the seam, in order to decrease the affect of interface.
5. Leftover areas: leftover areas always remain good, with less abrasion, so it can be processed by manual grinder, the same as stairs and outside wall.

- The stone surface is relatively glossy after retreading, it should be under regular maintenance.

Remove the retreading disk and drive plate, install pad drive instead, mount different type of 0#4# steel cotton on the pad drive. Put a little of stone material maintenance agent K2 on the floor, start up the weighted floor machine and extend to the area of 1-2 squares, evenly polish from left to right, then repeat polish up and down, until the stone surface completely dry and glossy. Then add luster agent K3 on the stone surface, make the stone surface smooth and shining, prolong the maintenance time.

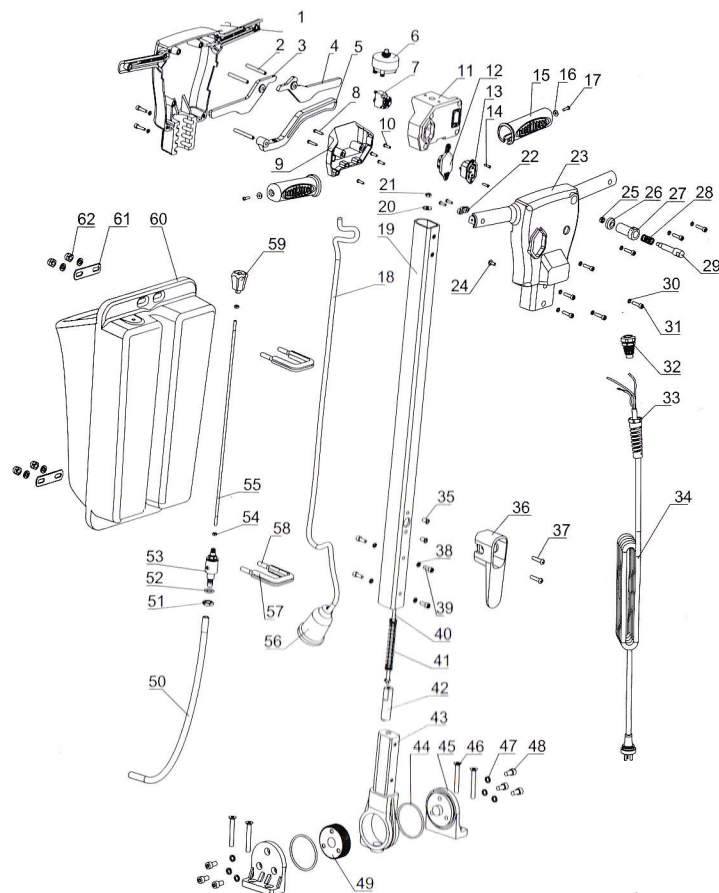
BF523A/524A/526A EXPLODED VIEW



NO. Name

- | | | | |
|---|--|--|--------------------------------|
| 1 --- Handle cover | 16 --- Support board | 31 --- Cable support | 46 --- Selector gear |
| 2 --- Left starting handle | 17 --- Operating lever | 32 --- Cable grommet | 47 --- O-rubber ring |
| 3 --- Right starting handle | 18 --- Steel skeleton | 33 --- Three-flat-pin plug power cable | 48 --- Pivot bracket |
| 4 --- Iron rod | 19 --- Cross countersunk head self-tapping screw | 34 --- Small wire | 49 --- Cross countersunk screw |
| 5 --- Fluid control lever | 20 --- Small cable clip | 35 --- Riveting nut | 50 --- Spring gasket |
| 6 --- Handle adjustment lever | 21 --- Overload protection device | 36 --- Wire block | 51 --- Allen screw |
| 7 --- Switch button | 22 --- Swashplate head screw | 37 --- Swashplate head screw | 52 --- Water pipe |
| 8 --- Switch spring | 23 --- Handle holder | 38 --- Allen screw | 53 --- Tank buckle |
| 9 --- Cross countersunk head self-tapping screw | 24 --- Allen screw | 39 --- Spring gasket | 54 --- Water tank |
| 10 --- Power switch bracket | 25 --- Cross countersunk screw | 40 --- Waterproof cover | 55 --- Support board |
| 11 --- Power switch | 26 --- Three hole outlet | 41 --- Pull rod | 56 --- Cap nut |
| 12 --- Cross countersunk screw | 27 --- Cross countersunk head self-tapping screw | 42 --- Spring | 57 --- Valve seat |
| 13 --- Swashplate head screw | 28 --- Three-hole outlet cover | 43 --- Selector casing | 58 --- Pull rod |
| 14 --- Hex nut | 29 --- Allen screw | 44 --- Hex nut | 59 --- Tank chain |
| 15 --- Flat washer | 30 --- Allen screw | 45 --- Selector plunger | |

BF523B/524B/526B EXPLODED VIEW



NO. Name

- 1 --- Handle cover
- 2 --- Iron rod
- 3 --- Left starting handle
- 4 --- Right starting handle
- 5 --- Handle adjustment lever
- 6 --- Power switch
- 7 --- Overload protection device
- 8 --- Cross countersunk head self-tapping screw
- 9 --- Switch box cover
- 10 --- Swashplate head screw
- 11 --- Switch box
- 12 --- Three-hole outlet cover
- 13 --- Three hole outlet
- 14 --- Cross countersunk head self-tapping screw
- 15 --- Handle wrap




- 16 --- Flat washer
- 17 --- Swashplate head screw
- 18 --- Small wire
- 19 --- Operating lever
- 20 --- Flat washer
- 21 --- Hex nut
- 22 --- Small cable clip
- 23 --- Handle holder
- 24 --- Swashplate head screw
- 25 --- Hex nut
- 26 --- Limit ring
- 27 --- Sleeve
- 28 --- Spring
- 29 --- Switch button
- 30 --- Spring gasket
- 31 --- Allen screw

- 32 --- Cable support
- 33 --- Cable grommet
- 34 --- Three-flat-pin plug power
- 35 --- Riveting nut
- 36 --- Wire block
- 37 --- Swashplate head screw
- 38 --- Spring gasket
- 39 --- Allen screw
- 40 --- Pull rod
- 41 --- Spring
- 42 --- Selector plunger
- 43 --- Selector casing
- 44 --- O-rubber ring
- 45 --- Pivot bracket
- 46 --- Cross countersunk screw

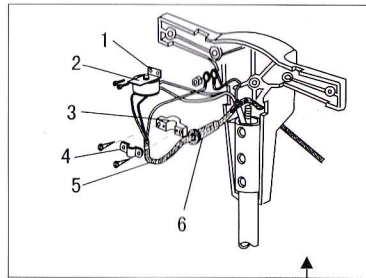
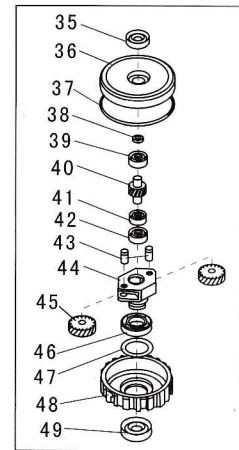
- 47 --- Spring gasket
- 48 --- Allen screw
- 49 --- Selector gear
- 50 --- Water pipe
- 51 --- Hex nut
- 52 --- O-rubber ring
- 53 --- Valve seat
- 54 --- Hex nut
- 55 --- Tank post
- 56 --- Waterproof cover
- 57 --- Rubber pad
- 58 --- Tank buckle
- 59 --- Tank knob
- 60 --- Water tank
- 61 --- Support board
- 62 --- Cap nut

BF523/523A/523B WEIGHTED FLOOR MACHINE

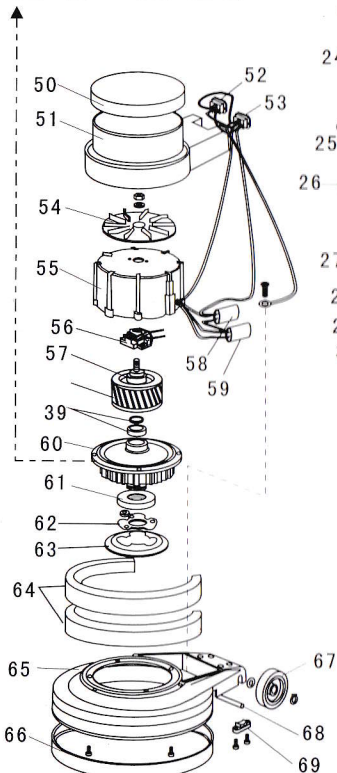
Technical Parameter

Model NO	BF523	BF523A	BF523B
Voltage	AC 220V 50Hz / 240V 50Hz / 240V 60Hz		
Power	1800W		
Working speed	168r/min		
Motor speed	1400r/min		
Noise level	≤62dB		
Cable length	12M		
Base diameter	17"		
Net weight	85Kg	90Kg	90Kg
Resistance level	IPX 1		
Regular longevity	5-6 years		
Material	Aluminum and plastic		
Anti-cautery	acid and alkalis resistance		
Shocking resistance	light shock resistance		
Accessories	heavy iron, carpet brush, floor brush, pad drive and water tank		
Main function	weighted floor		
Product picture			

BF523/523A/523B EXPLODED VIEW






1. Switch holder
2. Switch
3. Holder
4. Cable clamp
5. Core cable
6. Cable grommet
7. Cover
8. Steel ball
9. Safety interlock lever
10. Spring
11. Switch lever
12. Tank support
13. Valve rod
14. Wand
15. Cable holder
16. Cable straight connector
17. Cable support
18. Selector casing
19. Selector gear
20. Pivot bracket
21. Pin
22. Handle adjustment lever
23. Fluid control lever
24. Cover
25. Chain
26. Tank
27. Valve housing
28. Seal washer
29. Valve seat
30. Hose
31. Feed nozzle
32. Pull rod
33. Spring
34. Selector plunger
35. Oil seal
36. Top cover
37. O ring
38. Washer
39. E20 bearing
40. Lay shaft
41. 16004 bearing
42. E15 bearing
43. Gear shaft
44. Gear holder
45. Gear
46. 16011 bearing
47. Washer
48. Planetary box
49. Oil seal
50. Top cover
51. Motor housing
52. Angular socket
53. Inlet socket
54. Cooling fan
55. Stator housing
56. Starter switch
57. Rotor
58. Capacitor
59. Capacitor
60. Gear case
61. Drive hub
62. Drive hub plate
63. Drive plate
64. Heavy iron
65. Base casting
66. Rubber buffer
67. Wheel
68. Wheel axle
69. Axle retainer



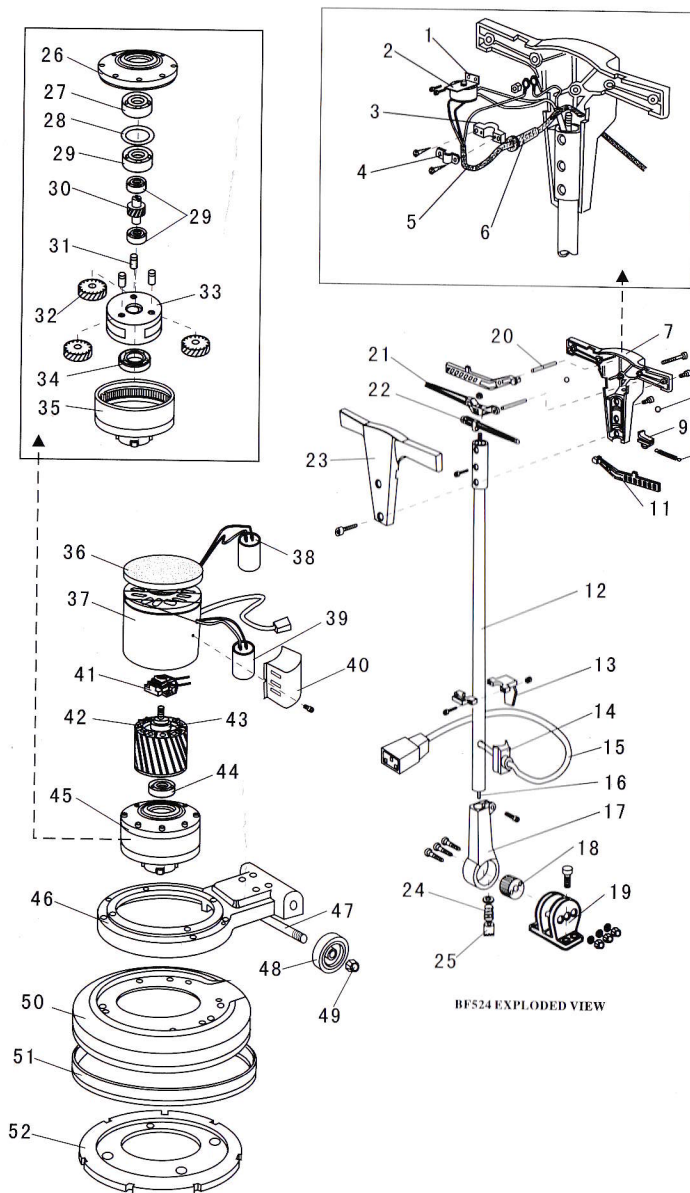
BF523/523A/523B EXPLODED VIEW

BF524/524A/524B WEIGHTED FLOOR MACHINE

Technical Parameter

Model NO	BF524	BF524A	BF524B
Voltage	AC 220V 50Hz / 240V 50Hz / 240V 60Hz		
Power	1800W		
Working speed	175r/min		
Motor speed	1400r/min		
Noise level	≤62dB		
Cable length	12M		
Base diameter	17"		
Net weight	84Kg	88Kg	88Kg
Resistance level	IPX 1		
Regular longevity	5-6 years		
Material	Aluminum and plastic		
Anti-cautery	acid and alkalis resistance		
Shocking resistance	light shock resistance		
Accessories	heavy iron and pad drive		
Main function	weighted floor		
Product picture			

BF524/524A/524B EXPLODED VIEW






BF524/524A/524B EXPLODED VIEW

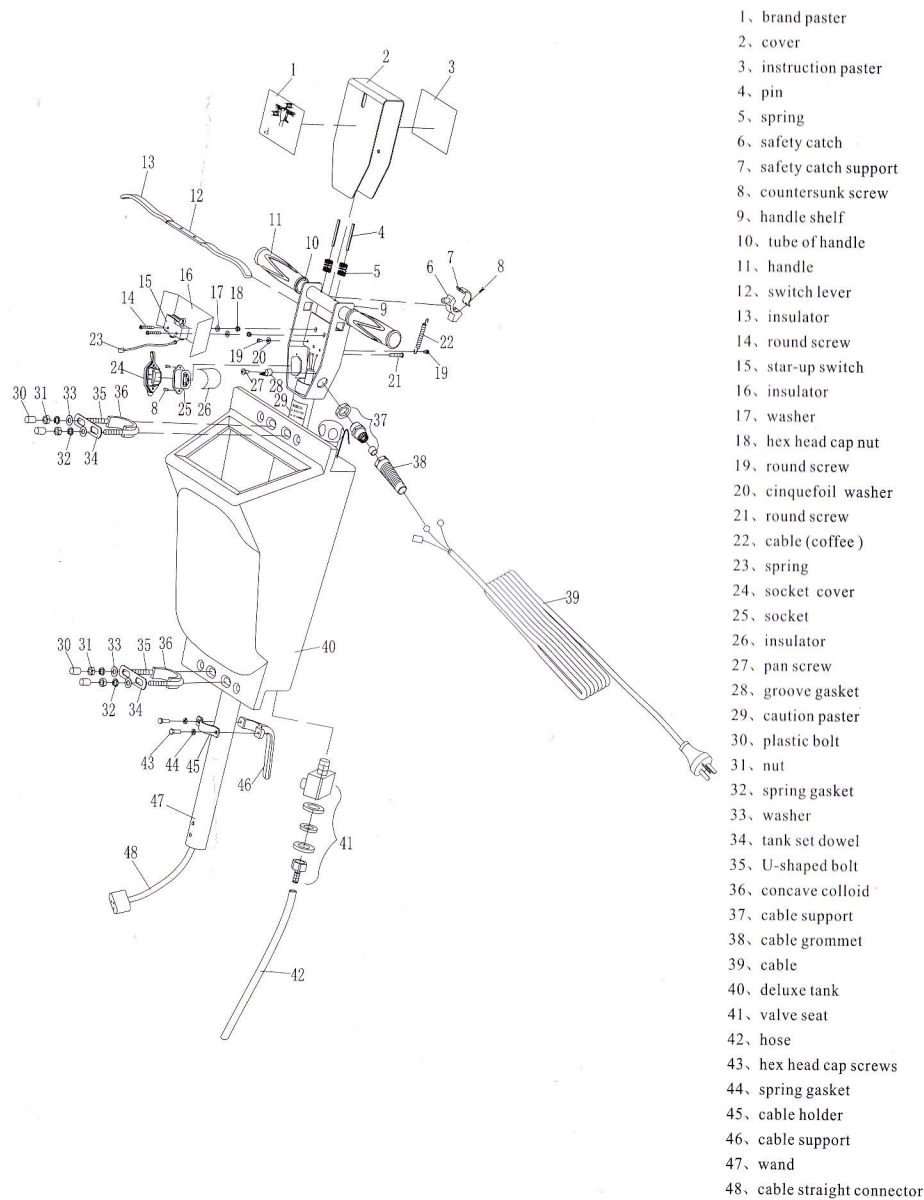
1. Switch holder
2. Switch
3. Holder
4. Cable clamp
5. Cable
6. Cable grommet
7. Cover
8. Steel ball
9. Safety interlock lever
10. Spring
11. Switch lever
12. Wand
13. Cable holder
14. Cable support
15. Cable straight connector
16. Pull rod
17. Selector casing
18. Selector gear
19. Pivot bracket
20. Pin
21. Handle adjustment lever
22. Fluid control lever
23. Cover
24. Spring
25. Selector plunger
26. Top cover
27. 6010 bearing
28. Bearing washer
29. 6002 bearing
30. Lay shaft
31. Gear shaft
32. Gear
33. Gear holder
34. 6204 bearing
35. Planetary box
36. Top cover
37. Motor
38. Capacitor
39. Capacitor
40. Capacitor cover
41. Starter switch
42. Rotor
43. 6203 bearing
44. 6002 bearing
45. Gear case
46. Top casting
47. Wheel axle
48. Wheel
49. Screw cap
50. Base casting
51. Rubber buffer
52. Heavy iron

BF526/526A/526B WEIGHTED FLOOR MACHINE

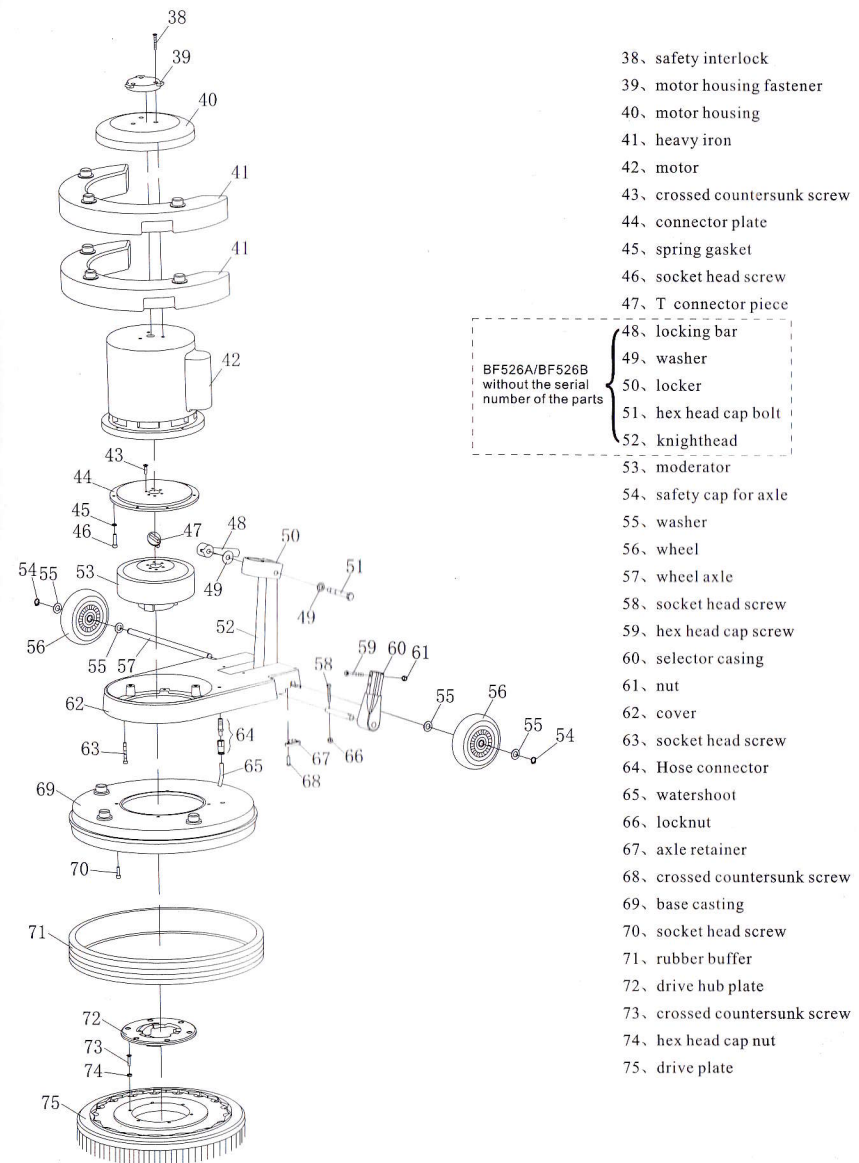
Technical Parameter

Model NO	BF526	BF526A	BF526B
Voltage	110V/50Hz/60Hz		
Power	1800W		
Working speed	175r/min		
Motor speed	1400r/min		
Noise level	≤62dB		
Cable length	12M		
Base diameter	17"		
Net weight	94Kg	94Kg	94Kg
Resistance level	IPX 1		
Regular longevity	5-6 years		
Material	Aluminum and plastic		
Anti-cautery	acid and alkalis resistance		
Shocking resistance	light shock resistance		
Accessories	heavy iron, carpet brush, floor brush, pad drive and water tank		
Main function	weighted floor		
Product picture			

BF526 EXPLODED VIEW



BF526 EXPLODED VIEW



INSPECT CERTIFICATE

Cable: ☒ _____ Charger: ☒ _____

Batteries: ☒ _____ Switch: ☒ _____

Outside: ☒ _____ Fittings: ☒ _____

Suction: ☒ _____ Control: ☒ _____

Fuselage: ☒ _____ Operation: ☒ _____

Manual: ☒ _____ Packing: ☒ _____

QC by: ☒ _____ Date: ☐ _____

PASS
QC 07