

CONTENTS

| | |
|--|-----|
| Product Introduction | 1 |
| Safety Considerations | 1 |
| Main Structure | 1 |
| Operating Procedures and Precautions | 2 |
| Care and Maintenance | 2 |
| Main Troubles and How to Solve Them | 3 |
| Included Accessories | 3 |
| Technical Parameters | 4 |
| Explosion Views | 5-9 |

Product Introduction

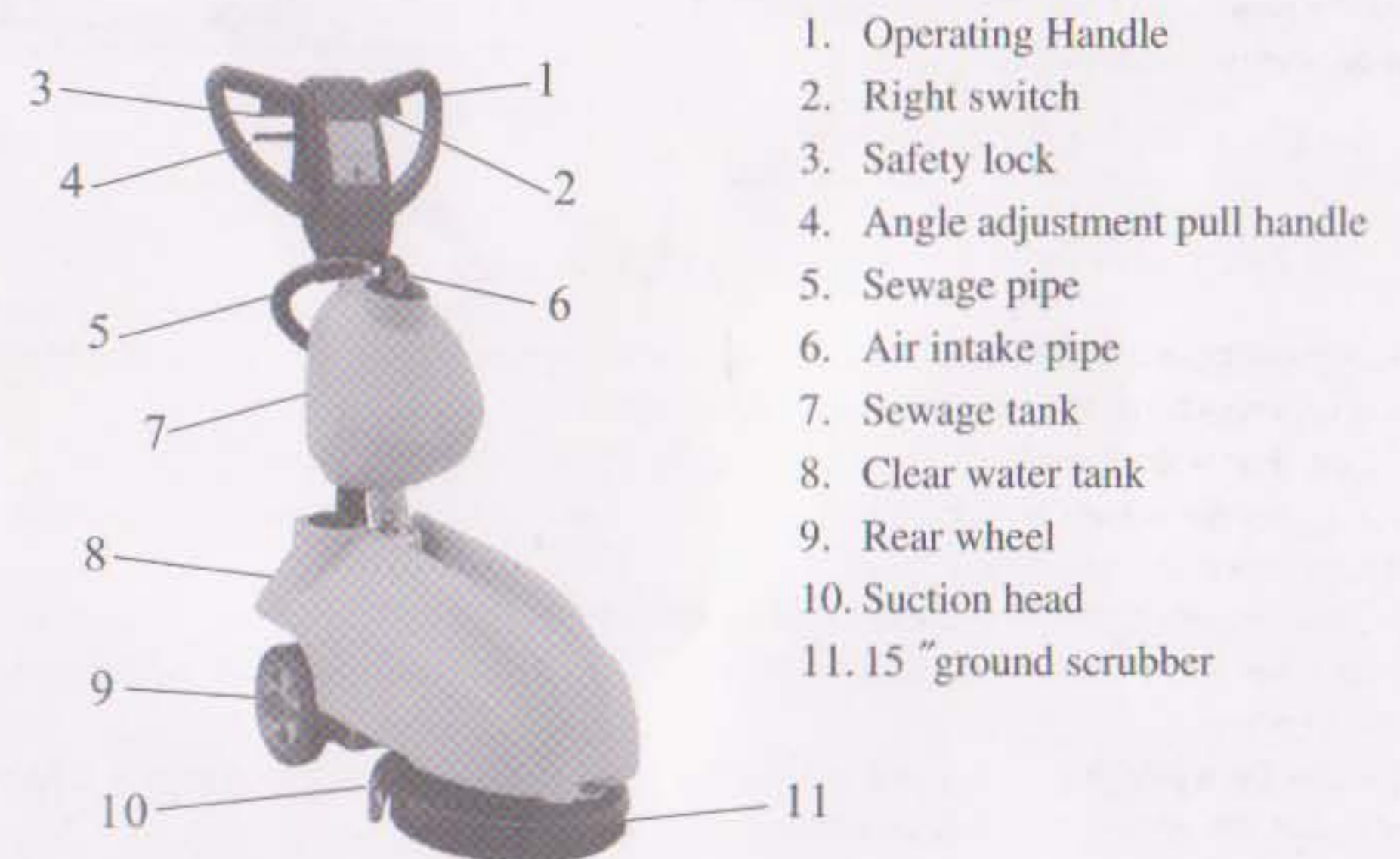
Welcome to buy and use XD4A Sweeper-Drier. This machine features in easy operation, safe use and good cleaning effect, suitable for cleaning of the small- and medium-sized grounds in office building, hotel, warehouse and square.

Safety Considerations

1. This machine is not suitable for cleaning of the carpet.
2. In the event that the recharger or electric cable is damaged, please immediately contact the manufacturer or its authorized service center.
3. Never mix different types of cleaning agents; otherwise toxic gas will be generated.
4. Never use this machine in explosive environment.
5. Never use this machine for suction of inflammable liquids.
6. Never use the acid liquids that can damage this machine.
7. Make sure to shut down this machine and disconnect the battery before maintenance.
8. Never clean this machine with high-pressure jet water or corrosive substances.
9. In case that the machine is caught to fire, please immediately use powder extinguisher. Never use water.

Main Structure

The main structure of XD4A multifunction al brushing machine is as shown in Fig. 1:



Operating Instructions

1. Unpack the machine and take it out from the base plate. Place the machine on ground and mount cleaning scrubber.
2. As shown in Fig. 1, adjust the angle adjustment pull handle to 90° - 120°. Then, remove the Clear water tank. Unlock the two clamps on the battery compartment at the back of machine and connect the battery to a fixed socket.
3. Install the battery compartment cover and clear water tank. Add an appropriate quantity of cleanser solution.
4. Install the sewage tank to the hook on the aluminum pipe of operating handle, and connect the suction pipe and sewage pipe to the sewage tank.
6. Put down the suction head UP/DOWN handle on the back of machine (Fig. 3). In this case, the suction head has been flatly placed on the ground. Pull the angle adjustment handle to adjust operating handle to the height desired by the operator. Then, release the handle.
6. Put the main scrubber switch (1), pumping switch (2) and solenoid valve switch (3) on the panel of operating handle to "ON" position. Check if the signal lamp is bright (green). Then, push the safety lock on operating handle to center, and close the hand-operated switch, so that the machine will start to work.

Fig.2

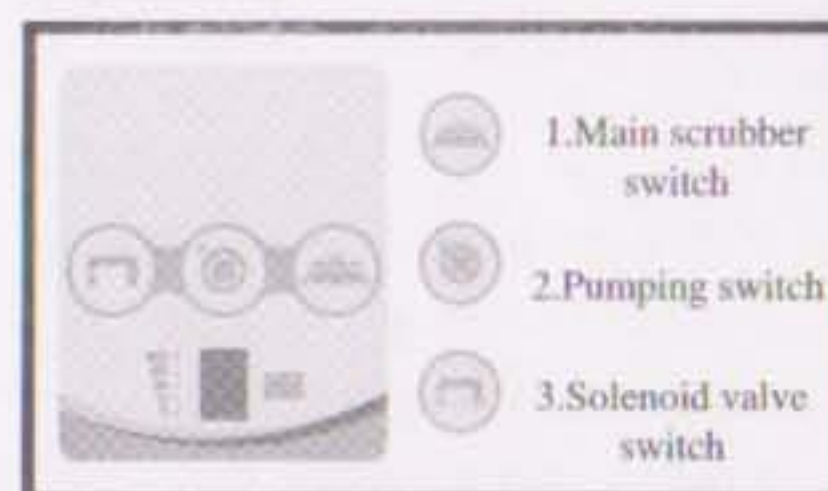


Fig.3



Care and Maintenance

To extend the service life of the machine and enable the machine to work under the best effect, it is suggested to do the following after each use:

1. Use clear water to wash the suction head clean and wipe with dry cloth.
2. Remove the sewage tank and use clear water to wash it clean. At the same time, use water to rinse the suction pipe clean.
3. This machine cannot be wash directly with water, but be wiped with semi-dry cloth, thus to ensure that no water will enter into the machine. Otherwise, the electric parts of the machine will be burnt.
4. when the machine is to be put long out of service, the battery shall be regularly recharged; otherwise the service life of the battery will be reduced.

Main Troubles and How to Solve Them

| Trouble | Cause | How to Solve |
|--|--|--|
| No power supply | The power socket is not properly connected The main scrubber switch is not put to ON position. | Connect the power socket properly Check and put it to ON position. |
| No suction force or the suction force is low | The suction pipe is blocked The sewage tank cover is not installed properly The pipe connection is not tight The suction carbon brush is worn | Check and wash the suction pipe Reinstall and seal the sewage tank cover properly Check and repair Replace the carbon brush |
| The scrubber motor cannot rotate after it is energized | The hand-operated power switch is burnt The scrubber motor is burnt The circuit board is failed The carbon brush of motor is worn | Replace the power switch Repair or replace the motor Repair or replace the circuit board Replace the carbon brush of motor |
| The suction motor cannot rotate after it is energized | The carbon brush of motor is worn The motor is short circuited and burnt The circuit board is failed | Replace the carbon brush Repair or replace Repair or replace the circuit board |
| The battery cannot be recharged | The battery is short circuited or aged The recharging circuit is short circuited or burnt The insert connecting the recharger is in poor contact | Replace with a new battery Repair or replace the recharger Check and repair |
| There is no water out during working | The circuit board is failed The solenoid valve is short circuited The drain pipe is blocked The drain switch is not put to ON position. | Repair or replace Replace the solenoid valve Check and clean the pipe Check and put it to ON position. |

Included Accessories

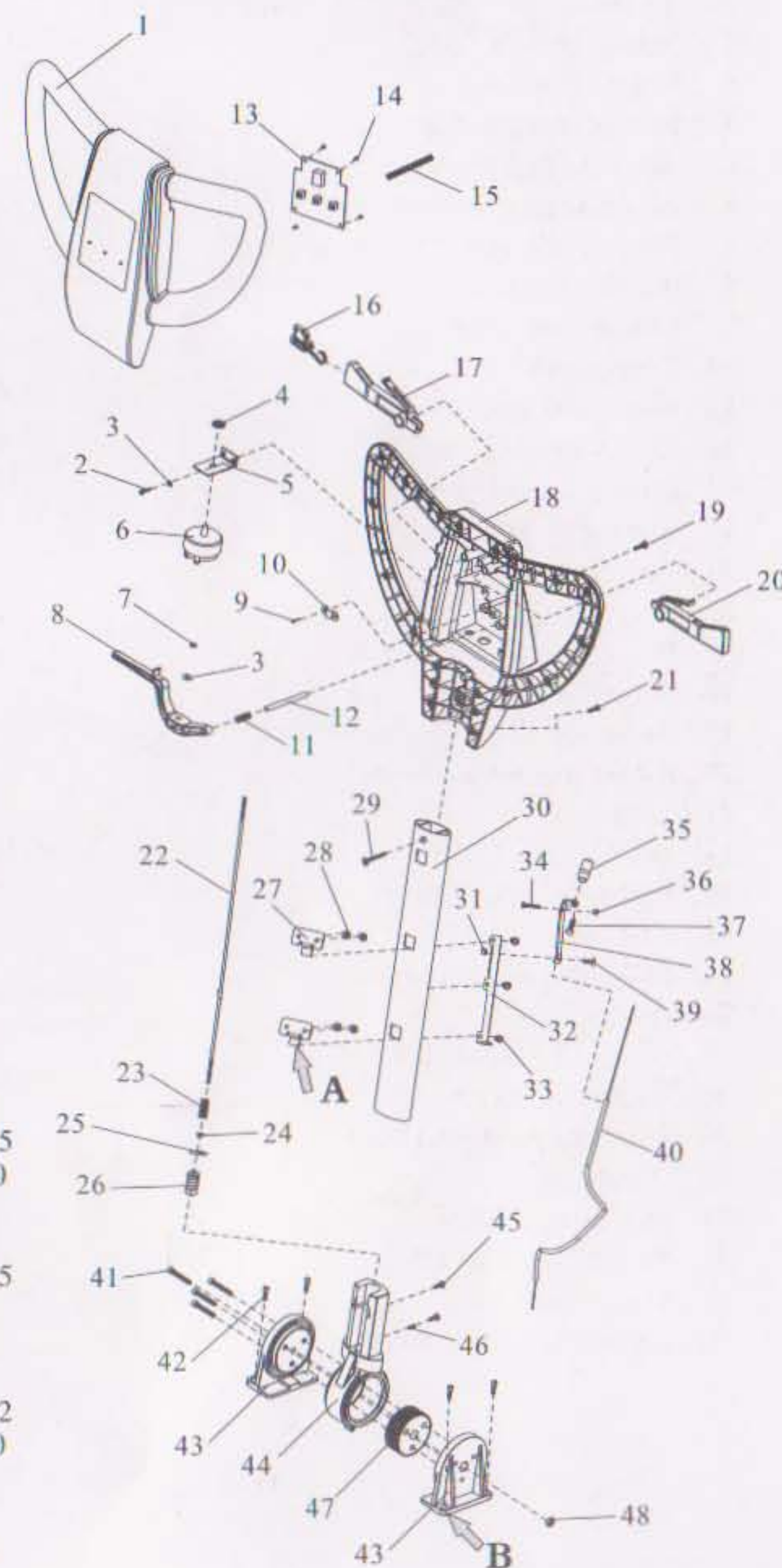
1. Machine, 1 set
2. Ground scrubber, 1 pc
3. Sewage tank, 1 pc
4. Clear water tank, 1 pc
5. User Manual, 1 copy

Technical Parameters

| | |
|--------------------------------------|-----------------------|
| Rated power / rated volatge | 500W / 12V |
| Working width | 370 mm |
| Width of suction head | 440 mm |
| Working efficiency | 1350m ² /h |
| Scrubber diameter | 370 mm |
| Scrubber speed | 165rpm/min |
| Scrubber motor | 250V/W |
| Suction motor | 250V/W |
| Clear water tank volume | 11L |
| Sewage tank volume | 11L |
| Battery | 12V/85AH |
| Battery recharger | 12V/20A |
| Battery compartment size (L x W x H) | 285X175X235 mm |
| Length of machine after folding | 970 mm |
| Height of machine after folding | 460 mm |
| Net weight | 67KG |
| Gross weight | 79.5KG |
| Packaging size (L x W x H) | 1110X560X485mm |

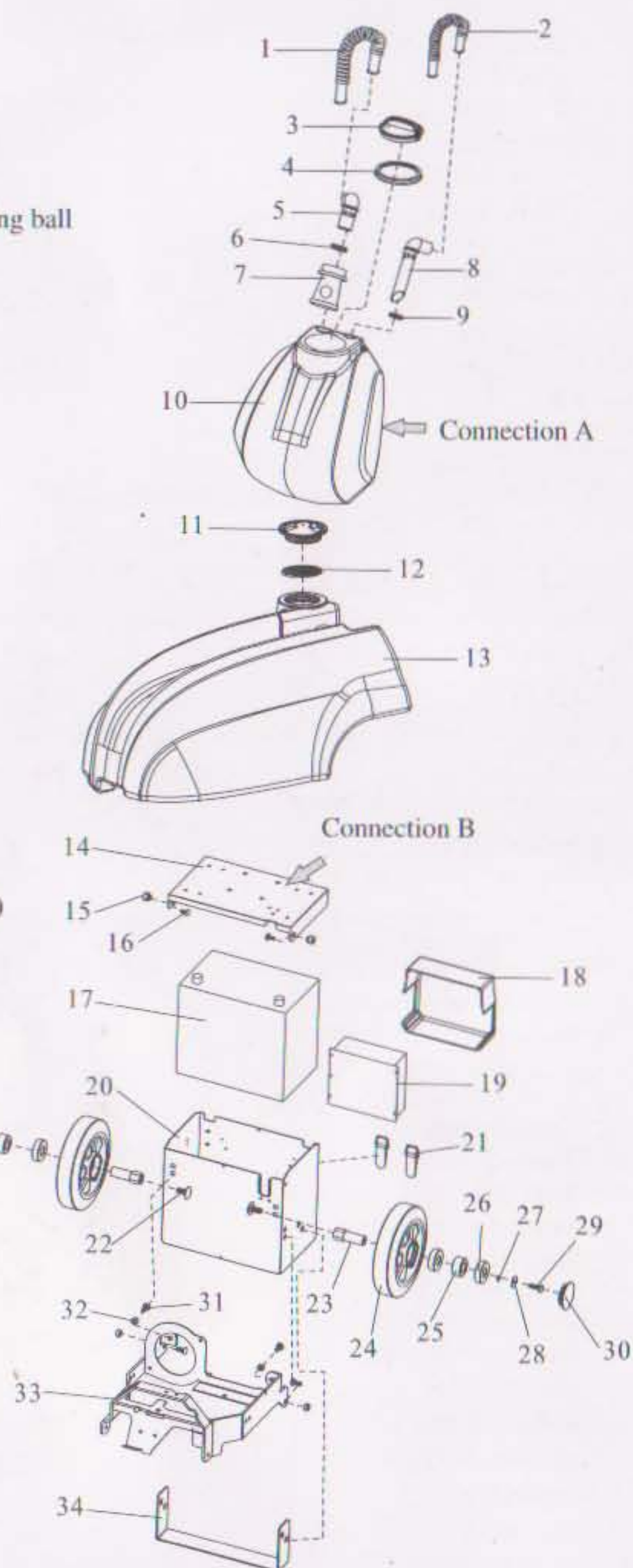
Erating Handle Sub-assembly

1. Front cover of handle
2. PA5X10
3. Flat washer
4. Nut M12X3
5. Round switch seat
6. Round switch
7. Self-lock nut M5
8. Angle adjustment handle
9. BAH3.5X16
10. Cable clamp (fine)
11. Handle spring
12. Pin
13. Circuit board
14. Steel PA3X10
15. Terminal strip
16. Safety lock
17. Left switch
18. Back cover of handle
19. BBH5X16
20. Right switch
21. TM6X25
22. Pull rod of handle
23. Spring 2X17X75X15N
24. Nut, M5
25. Washer
26. Needle tooth
27. Sewage tank support
28. Steel PM5X10
29. Steel CM5X45
30. Aluminum tube of handle
31. Self-lock steel nut M6
32. Suction head mechanism
33. Steel outer hexagonal 6X15
34. Steel outer hexagonal 5x20
35. Rubber casing M8
36. Self-lock nut M5
37. Steel outer hexagonal 8X25
38. Suction head mechanism
39. Steel set screw KM6X12
40. Clutch cable
41. Steel outer hexagonal 6X72
42. Steel outer hexagonal 8x20
43. Handle seat
44. Handle seat casing
45. Steel outer hexagonal 6X10
46. Slotted pin 4X20
47. Round tooth
48. Self-lock steel nut M6



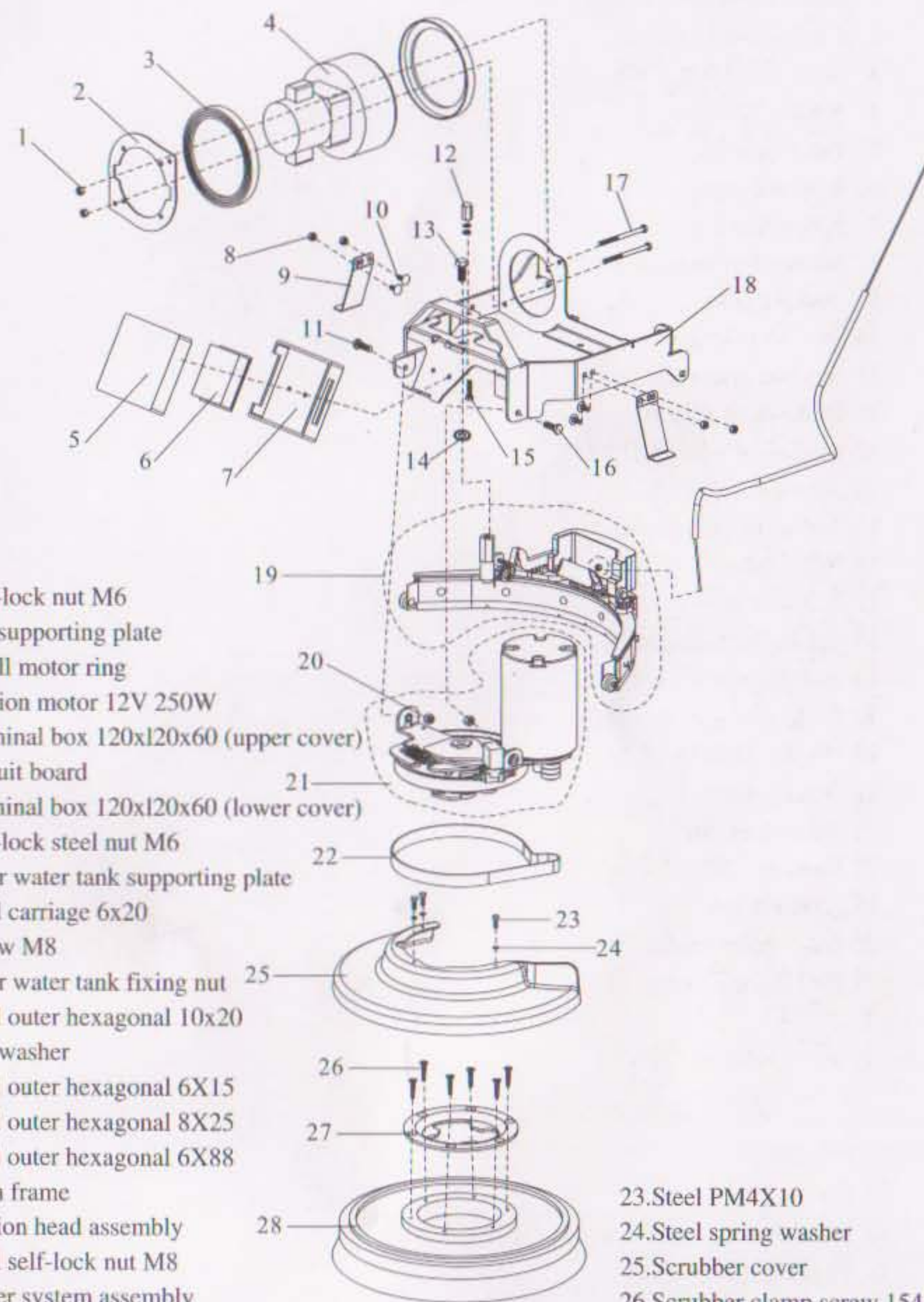
Water Tank / Support Sub-assembly

1. Air intake pipe
2. Sewage pipe
3. Sewage tank cover
4. Sewage tank seal ring
5. Air intake pipe connector
6. Air intake pipe seal ring
7. Floating ball support and floating ball
8. Sewage pipe joint
9. Sewage tank seal ring



Pumping System Assembly

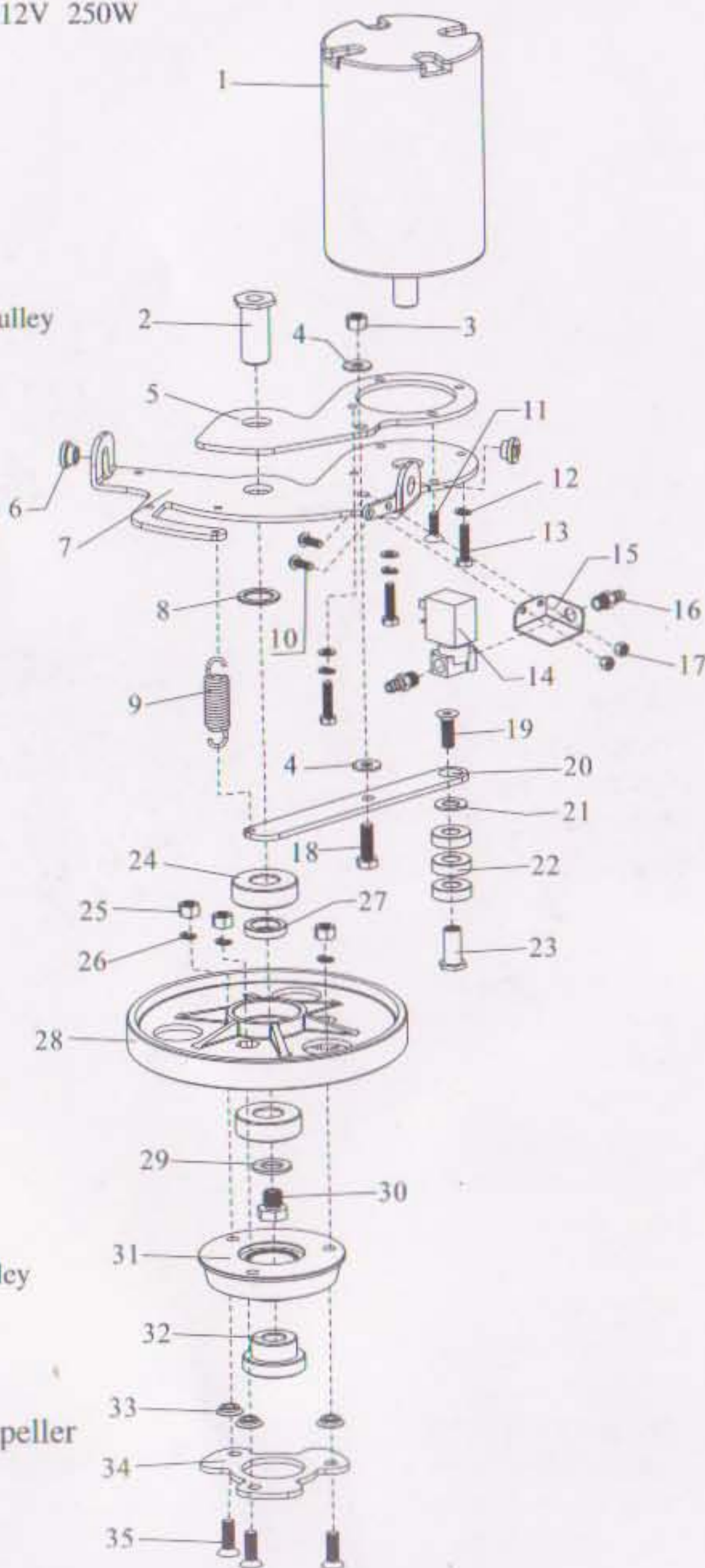
1. Self-lock nut M6
2. Fan supporting plate
3. Small motor ring
4. Suction motor 12V 250W
5. Terminal box 120x120x60 (upper cover)
6. Circuit board
7. Terminal box 120x120x60 (lower cover)
8. Self-lock steel nut M6
9. Clear water tank supporting plate
10. Steel carriage 6x20
11. Screw M8
12. Clear water tank fixing nut
13. Steel outer hexagonal 10x20
14. Star washer
15. Steel outer hexagonal 6X15
16. Steel outer hexagonal 8X25
17. Steel outer hexagonal 6X88
18. Main frame
19. Suction head assembly
20. Steel self-lock nut M8
21. Power system assembly
22. Belt 770JB channel



23. Steel PM4X10
24. Steel spring washer
25. Scrubber cover
26. Scrubber clamp screw 154
27. Scrubber clamp 154
28. 15 "ground scrubber

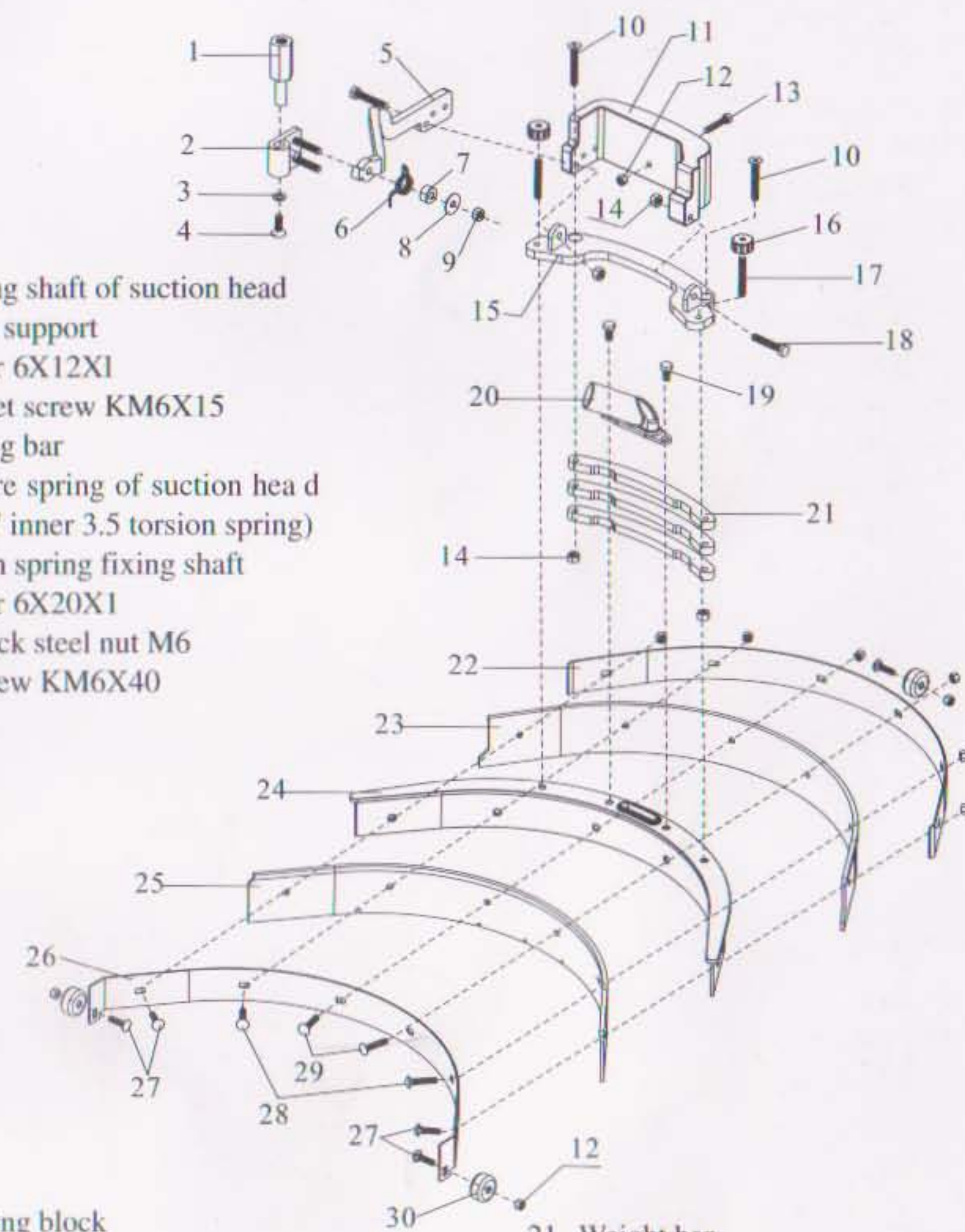
Explosion View of XD4A Power System Assembly

1. Brush motor SHWT70098 12V 250W
2. Central axis of pulley
3. Steel self-lock nut M8
4. Washer 8X20X2
5. Fan supporting plate
6. Movable copper washer
7. Motor fixing plate
8. Washer for central axis of pulley
9. Spring (37 #)
10. Steel PM5X10
11. Steel set screw KM6X12
12. Steel spring washer
13. Steel outer hexagonal 6X15
14. Solenoid valve 12V
15. Iron piece of drain valve
16. Water jacket
17. Self-lock steel nut M5
18. Steel outer hexagonal 8x20
19. Steel set screw KM8X20
20. Pressure regulating iron
21. Washer 12X23X1.5
22. Bearing 6001
23. Belt wheel axis
24. Bearing 6204
25. Steel nut M8
26. Steel spring washer
27. Belt bearing casing
28. Pulley
29. Flat washer 15X28X2.4
30. Nut for central axis of pulley
31. Flange
32. Flange plug
33. Washer of three-blade impeller
34. Three-blade impeller
35. KCM8X50



Suction Head Assembly

1. Rotating shaft of suction head
2. Rotary support
3. Washer 6X12X1
4. Steel set screw KM6X15
5. Landing bar
6. Pressure spring of suction head (1.6X17 inner 3.5 torsion spring)
7. Torsion spring fixing shaft
8. Washer 6X20X1
9. Self-lock steel nut M6
10. Set screw KM6X40



11. Landing block
12. Self-lock steel nut M5
13. Steel outer hexagonal 5x28
14. Self-lock steel nut M6
15. Connection block of suction head
16. Star head screw M6
17. Steel machine screw 6X40
18. Steel outer hexagonal 6X35
19. Steel outer hexagonal 6X15
20. Joint of suction head

21. Weight bar
22. Rear pressure board of suction head
23. Rear pressure strip of suction head
24. Suction head casting
25. Front rubber strip of suction head
26. Front pressure board of suction head
27. Steel carriage 5x20
28. Steel carriage 5x30
29. Steel carriage 5x35
30. Small rubber roller of suction head