

Specifications

	E 24	E 26
Working width	24 in (60 cm)	26 in (65 cm)
Squeegee width	35.4 in (90 cm)	35.4 in (90 cm)
Theoretical area of performance	31,000 ft ² /hr (2,880m ²)	34,445 ft ² /hr (3,200 m ²)
Actual area of performance	23,680 ft ² / hr (2,200 m ²)	25,640 ft ² /hr (2,382 m ²)
Working speed	3 mph (5 km per hr)	3.1 mph (5 km per hr)
Rated voltage	24 volts	24 volts
Vacuum cfm	65 cfm	65 cfm
Vacuum waterlift	65 inches (165 cm)	65 inches (165 cm)
Vacuum Power	.86 HP (640 W)	.86 HP (640 W)
Drive motor Power	.42 HP (313 W)	.42 HP (313 W)
Brush Type	Cylindrical	Disc
Brush motor(s) Power	1 HP	.75 HP (2)
Number of brushes	2	2
Brush diameter	24 in (60 cm)	26in (65 cm)
Brush RPM	850 RPM	180 rpm
Aqua-Stop Equipped	N/A	Yes
Solution capacity	19 Gal (72 liters)	19 Gal (72 liters)
Recovery capacity	19.5 Gal (74 liters)	19.5 Gal (74 liters)
Dry Weight	346 lbs (157 kg)	346 lbs (157 kg)



Not Just Clean, It's Green.

Not Just Clean, It's Green!

- Sound Level </= 70dBs
- Maintenance Free Gel Batteries
- One Button Operation
- Aqua-Stop Feature Available
- Tool Free Brush Removal
- Tool Free Squeegee Removal

Please visit www.minutemanintl.com for more information on our Green Features.



EQUIPPED WITH AQUA-STOP



E24 & E26
24" and 26" Walk-Behind Scrubbers

Minuteman International Inc
111 S. Rohlwing Road
Addison, IL 60101
Phone: (630) 627-6900
Fax: (630) 627-1130

A Member of the Hako Group

Minuteman is a full line manufacturer of sweepers and scrubbers; as well as critical filter vacuums, industrial and commercial vacuums, floor and carpet machines, and litter vacuums for commercial and institutional facilities, whereas PowerBoss is a full line manufacturer of sweepers and scrubbers for industrial facilities.

Come Visit our Website at
www.minutemanintl.com

General Overview

- The E24 has a cylindrical brush deck with integrated sweeping function. The cylindrical deck is made of corrosion-resistant aluminum casting
- The E26 is a disc model equipped with Aqua-Stop

Productivity

- Two powerful brush motors guarantee an even cleaning result across the whole width of the machine
- Large tank opening in clean water tank saves time when filling using automatic filling systems. Run time and tank filling are in tune with each other
- Low brush deck is ideal for cleaning underneath obstacles such as skids, warehouse racks and other stationary objects
- The E24 covers 23,680 actual ft² / hr (2,200 m²) and the E26 covers 25,640 actual ft² /hr (2,382 m²)

Ease of Use

- The direct Brush Release System (BRS) allows brushes to be changed quickly.
- Easy, ergonomic operation as a result of the compact, maneuverable construction
- Simple, easy-to-understand controls ensure that the machine is quickly mastered and maintenance is easy
- Ergonomic, adjustable speed regulation.
- Ergonomic hand bails offer great control of the machine
- Designed to give the operator more room for their feet while operating the E24 or E26

Easy handling, superb performance, environmentally-friendly.



E24 Cylindrical Deck



E26 Disc Deck

Low brush deck is ideal for cleaning underneath obstacles.



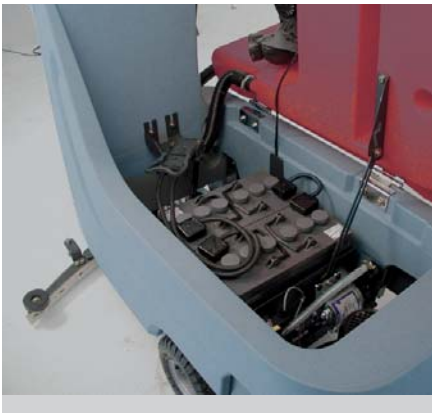
Squeegee provides optimum pick-up of dirty water, making the floor traffic-ready almost immediately.



Large tank lid provides access for easy clean out.



Large tank opening allows for fast fill and automatic filling systems.



Easy access to the batteries and drive system for service and maintenance.



Simplified and easy-to-understand operator controls.

Key Features

- Battery running time to suit the application, on-board charger standard
- Flow-optimized dirty water tank with **AFS** (Anti-Foam System) to protect the vacuum turbine. As a result of the large tank lid, easy access for cleaning purposes
- E24 and E26 have a 19 gal solution tank and a 19.5 gal recovery tank
- With the squeegee's Quick Adjust System, even challenging floors are left virtually dry
- Service-friendly access to batteries and drive
- On-board charger is convenient and allows you to charge the E24 or E26 anywhere
- Aqua-Stop system provides additional cost savings and environmental protection on the E26.
 - brushes and water stop automatically when the machine comes to a stand still
 - precise dosage of cleaning solution
 - amount of cleaning solution released depends upon machine speed*Aqua-Stop is not available on pad drivers*

Safety

- Designed to give the operator an excellent line of sight to the area that needs to be cleaned
- Easily cleanable, hygienic recovery tank
- When on-board charger is plugged in, the machine is not operable
- The LCD will flash an error code when the machine has a service need

Markets

- Hospitality
- Institutional
- Industrial
- Healthcare
- Building Service Contractor
- Airports

Accessories/Options

- "Silencer" option means significant noise reduction